

CELEBRATING THE 60TH ANNIVERSARY OF NAYLAND WITH WISSINGTON COMMUNITY COUNCIL

HOW IT ALL BEGAN

The 1960s was a time of great change and expansion in Nayland, with development of new homes on The Heights and creation of the by-pass to ease traffic through the village centre. With the expanding population came a requirement for greater recreational facilities and amenities.

On 20th June 1966 at the first meeting of what was to become the Community Council General Fairbanks was appointed Chairman and Ken Willingale was appointed Treasurer of a Steering Group to take forward the project of providing a recreation ground and village hall for the community.

This was to be quite unlike any other council being formed at that time; membership would be made up of a representative from each of 21 organisations in the village (such as, the various sports clubs, groups for youngsters or the older populations, the church councils, Royal British Legion, Women's Institute, Parish Council, and so forth) plus some individuals with an interest in the community. This would ensure wide representation of the community.

The aims of the Council, as established in the Constitution agreed on 28th September 1966, would be to encourage recreational activities in the interests of social welfare but the immediate priority would be to purchase land and build a village hall.

Thus began the accumulation of funds by various means. The Nayland Nest Egg was set up; the Annual Fairs, with their carnivals, market stalls, grand draw, sideshows, donkey derby, duille flunking, rustic romps, meadow larks among other wonderful fun and games were very successful fundraisers; grants were also pursued from various sources.

As funds accumulated the Council was able to look for suitable land on which to build the village hall; Webb's Meadow was purchased at a cost of £7,000. The Council then put out to tender for the erection of a village hall which was in the region of £14,800. After construction had commenced the grants situation changed and the only course of action was to involve the Parish Council; a lease agreement, dated 17th December 1970, established that 1. that the freehold is with the Parish Council, 2. that the trustees are to be the Charity Commissioners, 3. that the tenants are to be the Management Committee.

This Village Hall Management Committee was set up. The Community Council from that point resumed its functions to make grants and provide facilities in line with its Constitution; "to encourage and develop recreational facilities in the interests of social welfare". The Community Council is a registered charity, number 304926.

It is a credit to all those involved in the early years that within the space of six years the land had been purchased, planning permission had been granted and the hall had been built and completely paid for when it was officially opened by Sir Joshua Rowley on 5th August 1972.

The formation of the Community Council also enabled integration of long term and new residents, those who came from different walks of life and varying ages, as it still does today.



The decorated floats in the procession crossing Anchor Bridge.

Part of the "Duile Flunking" competition, an old ale house sport.

Egg and spoon was a regular race enjoyed at the fairs.



'HAVING A LARK' FUNDRAISING

In the initial years of fundraising to provide a village hall the Community Council organised a host of interesting and fun-filled events, for example:

1967: Colourful Carnival & Donkey Derby

Floats in the decorated procession included an entry from the Jane Walker Hospital at Wiston, the winning entry from the Nayland Anchor, picturing workmen on Nayland's new by-pass and a float from the Brightlingsea Rosebud. Every donkey race had drama and there were many falls but no broken bones as stewards caught donkeys who had thrown their riders. After the racing the drums, fifes and pipes of the Royal Anglian Regiment beat retreat, ending a colourful and unusual day. After expenses it was hoped to have £400 towards their preliminary target of £7,000.

1968: Nayland's Whitsun Floralia

An old Nayland custom was revived when villagers celebrated the 'Feast of Floralia'. The celebrations were an annual event in the village 500 years ago when festivities started at dawn and continued well into the night.

In the modern version of the fair, like the original celebrations there was a procession through the streets, a village market and contests of strength for the men. More modern amusements were a bugle band, a magic show, talking dolls and a display of woven goods made in the village. There was also a 'Duile Flunking' contest, an old ale house sport.

1974: Nayland Revels

A Market Fair organised by the Community Council made a profit of £600. A programme of 'Rustic Romps', crazy sports for cash prizes, organised by John Curtis was the main attraction.

Many sidshows did a brisk trade, including an exhibition of 'Nayland Past and Present'. A children's fancy dress competition produced some original ideas.

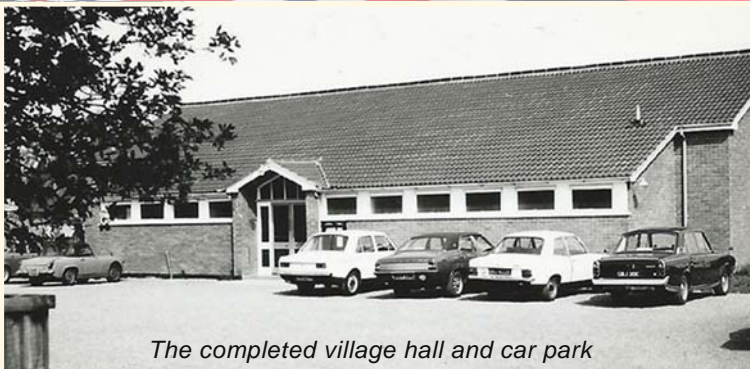
1975: Fun of the Fair

Nayland Market Fair and 'Meadow Larks' held on the village playing field raised more than £850 for village hall funds. Organised by Nayland Community Council, the event attracted an estimated crowd of about 1,500.

The Meadow Larks, crazy sports for all ages, provided some hilarious moments as competitors hurled Swedes, tossed pancakes, staggered around the arena under enormous straw bales or in piggy-back races.

1978: Rustic Romps

In addition to the numerous sidshows and stalls run by local organisations, the programme of 'Rustic Romp' crazy sports proved a popular attraction for all ages. Miss Nayland, Debbie Harris, donned running shoes to take part in the crazy sports. A record profit of £1,300 was raised for Community Council funds.

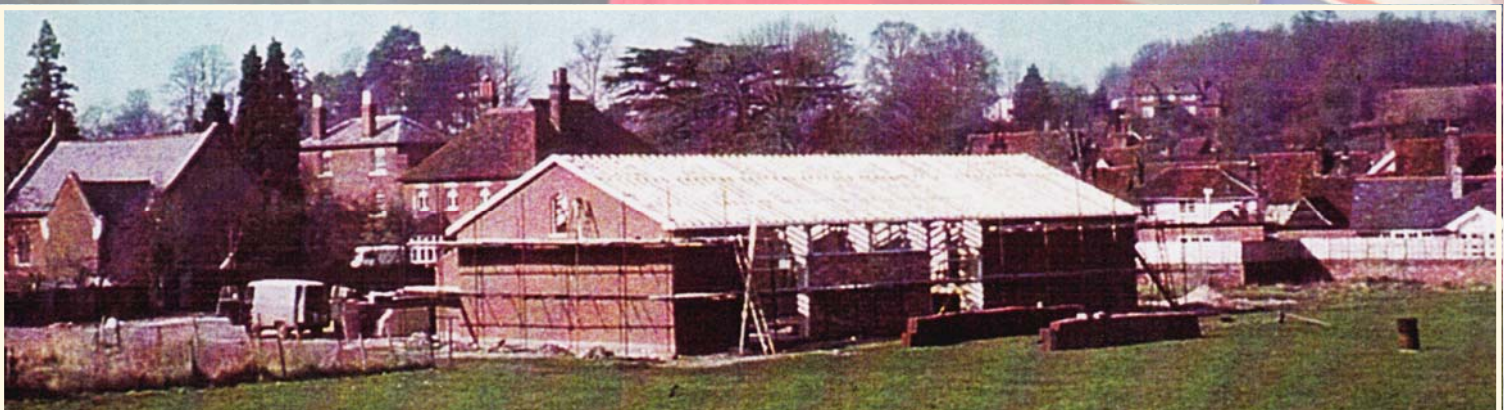


The completed village hall and car park

THE VILLAGE HALL

Construction of the village hall started on 20th September 1971. The hall was officially opened on Saturday 5th August 1972; the Management Committee took over responsibility for the hall from the Community Council on the same day.

The Village Hall Management Committee was established at a special Parish meeting on 7th May 1970. After considerable delay the Trust Deed establishing the Committee was finalised on 8th January 1971 and the necessary action was taken to transfer the property from the two Trustees into the hands of the Official Custodian of Trust Properties for a period of 60 years from 14th October 1969.



CONTINUING AIMS

Once the Village Hall Management Committee took over responsibility of the hall the Nayland with Wissington Community Council, which is an umbrella organisation for some 20 Nayland societies continued with its aims and objectives "to provide adequate recreational facilities and other amenities for the benefit of the community".

Its main activities are:

- ◆ the annual Fireworks and Bonfire
- ◆ the Village Quiz
- ◆ fund raising opportunities for village societies in a Christmas Fayre
- ◆ a Summer Street Fayre or Festival
- ◆ community events such as Jubilee Celebrations
- ◆ the village calendar is produced using photographs generated in a competition held in May each year
- ◆ it publishes a bi-monthly newsletter - The Community Times
- ◆ contributes financially to the website naylandandwiston.net
- ◆ It maintains community access defibrillators at the Village Hall and in Wiston
- ◆ It awards grants to village organisations or individuals in support of its constitution

The Council meets bi-monthly in the Church Hall at 8pm. Individuals with an interest in our community are welcome to attend.

For more information about the Community Council, its meetings, activities, grants, history and the village calendar and Community Times visit www.naylandcommunitycouncil.org.uk

JUBILEE CELEBRATIONS

The Community Council has organised events to celebrate Queen Elizabeth II's Silver, Golden, Diamond and Platinum Jubilees and the Coronation of King Charles III. Weather permitting street parties were held, with contingency plans for rain.

MEMORABILIA

To mark these events all children of the parish received commemorative mugs, or for the Golden Jubilee coins, funded by the Community and Parish Councils.



1977 Silver Jubilee



2002 Golden Jubilee

NAYLAND'S Golden Jubilee street fayre had a distinctly patriotic air with its kings and queens theme. Union Bunting and streams of red, white and blue bunting decorated the village centre. Warm sunshine drew hundreds of visitors to the community council event and the main square buzzed with activity on Sunday as people strolled among the stalls or paused to watch a variety of entertainment. Organiser Andrew Gowen said: "We had a most successful day, taking more than £600 on the gates. The dozen or so village organisations who ran stalls all did well and the entertainment was very good." Nayland Choir presented a selection of popular music and the day-long programme also featured Punch and Judy shows, the Algham-based Boys and Belles clog dancers, Boxted Silver Band and excerpts by the Village Players. Local craftsmen showing their work included furniture maker Dylan Pym from Polstead and Nayland photographer and greetings card designer Julie Wilkinson.

Children produced an assortment of original ideas for their fancy dress parade and the three winners were: Matthew Stephens-Row as the King of Nayland, Alexander Hucker as Beodica and Ana Stephens-Row as a queen. The fayre ended in St James's Church in an evening with the Village Players staging a stylish and beautifully-costumed presentation of The Hollow Crown. Devised by John Barton of the Royal Shakespeare Company, the production comprised a selection of letters, speeches, poems,



●Above: Nutty Norman, Town Crier in action.
●Left: Demi Laytham (5) cools down with an ice cream.
●Top left: Nayland Youth Club members and their Trivial Pursuits game.

2012 Diamond Jubilee



2022 Platinum Jubilee



THE 1980s AND 90s

In the early 80s crazy obstacle courses enjoyed by all ages were a highlight of the Community Council's Summer Fairs.

In 1989 four local teams battled through a series of hilarious games. Eventual winners of the Knockout Shield were Nayland Eagles with the Leavenheath Lion second and Jane Walker Hospital third. There were as usual many stalls run by village organisations, children's competitions and fancy dress. Other amusements were pony rides, a big dipper and face painting. In the evening there was a barn dance.

The following year an ingenious obstacle course designed for all ages had children and adults queuing to beat the clock. The course was one of many popular features, including a static microlight and model aircraft display, a flight in the microlight was one of the raffle prizes. Profit was £1,400 and part of the proceeds will help fund the newly established free newsletter, the Community Times.

The tug-of-war also became a feature of the Summer Fair around this time. In 1991 six teams, including two from Nayland took part - a hefty eight-man team from Tolleshunt D'Arcy's Queen's Head heaved their way to a 2-0 victory over Mistley Quay in the tug-of-war final. Horse and carriage rides around the village were another popular attraction, as well as displays by Glemsford Emeralds majorettes and Rowhedge Morris Dances.

In 1986 a steady downpour didn't stop play and the fete went ahead as planned with some stalls taking refuge in the village hall or a marquee. The weather did not stop one of the main attractions - a parachute jump by four members of the Phoenix Free Fall Team from Ipswich. A Dog Obedience Team from Hadleigh also braved the rain as did David Winnards's show herd of goats, the display of classic cars and Roger Clarke's working shires horses gave rides in a cart.

In the 1988 it's a Knockout completion the eventual winners were Nayland Rangers, with Jane Walker Hospital team second and Leavenheath Lion third of five teams. Pledge auction items included a visit to Prime Minister's question time in the house of Commons arranged by Tim Yeo MP. A Victorian carousel with prancing horses, music and light proved popular with children and there were also puppet shows and races. In the evening there was a music hall variety show, 'The Good Old Nayland Days' staged by the Village Players.

By the mid-90s, with a Church Fete introduced in the Spring and their annual Fair in the summer the Community Council considered that two fairs in the year was a lot to sustain and organise. New ideas were sought and the last Fair was held in 1995. For a few years a Barn Dance with a Grand Raffle, was held in local farm barns.



1983: Nayland's vicar, Rev David Stranack, being drenched in the stocks.

1986: Magician Michael Dodd entertained children in the hall when rain tried to stop play.

1988: Soaking wet but cheerful, Julie Harris and Garry Thorogood in the It's A Knockout races.

2000: Four mums, Nicky Hall, Tracey Poole, Gill Boardman and Claire Prescott, with some of the 90 children aged four to nine celebrating the new century.



NAYLAND WELCOMED THE MILLENNIUM

Two major events marked the turn of the century in Nayland. Firstly, mid-day on the 31st December saw the long awaited official opening of the revitalised Village Hall. Then, the celebration of the Millennium with a torchlight procession, fireworks, bonfire and dancing in the new hall.

Just after 11pm, people of all ages came in numbers from all corners of the village, bearing lanterns and lights and, even more impressively, flaming torches, which lit their way down to the village square around the Christmas tree. There they were joined by a large contingent of barn dancers and moved down to Court Knoll, the earliest Nayland settlement. What an appropriate place wherein to welcome the start of another thousand years.

A large bonfire had been prepared and lit by Fred and Tom Bugg and shadowy figures of the firing party - Iain Wright, Andrew Gowen and Mick Barratt - attended to the last details. The bursting lights, the smoke and cordite drifting on the wind and crescendo after crescendo of noise, flash and explosion gave us a magnificent display worthy of the occasion. We returned to the Village Hall where the 'Last Resort' Band continued to play into the early hours of the



morning. We Stripped the Willow, and Cumberland Squared with verve and gusto, children and adults, learning as we went along.

It was the turn of the younger generation to have their own Millennium celebration in July 2000. Rain made it necessary to move the planned Street Party into the village hall. After two hours of singing and dancing the excited guests sat down to a slap-up tea with a cake making up the number 2000. At the end of the afternoon a net of balloons was let down and every child took home a commemorative mug.

OTHER COMMUNITY EVENTS & ACTIVITIES

During the 1980s the Community Council introduced other activities and events to their annual calendar. A Valentine's Dance was first held in 1982; also in that year the newly formed Horticultural Society were invited to hold a Flower Show as part of the Summer Fair.

In 1983 the first Bonfire & Firework Night was held - and is still a hugely popular evening. The first Christmas Bazaar was held in 1984 and having been given a new look in 2009 continues, as a Fayre, to mark the beginning of the festivities in Nayland.

The Community Council provided the very first village Christmas tree, although without lights, in 1987. The following year it was decorated with lights and there was a switch-on ceremony with carols accompanied by the Boxted Silver band. The tree has been provided ever since and from 2014 had permanent underground fixings installed.

The first issue of the Community Times was published in October 1989. A Village Quiz was introduced to the calendar of events in March 1994. In 2006 Joan Moore initiated Nayland's entry in Anglia in Bloom supported by the Community Council; the village won a silver award certificate in the best village category. It was also judged best new entry and received an engraved glass plate.

In the early noughties Street Fayres in the High Street were introduced; the first, in 2001 and the brainchild of Andrew Gowen, had a wartime theme. There was a wonderful atmosphere with non-stop entertainment and displays; village societies showcased their talents and ran stalls and sideshows.

The following year another Street Fayre was held to celebrate Queen Elizabeth II's Golden Jubilee, followed in 2004 with a US Independence Day theme and in 2006 Bastille Day.



- ↑ 2001 Street Fayre with a war-time theme
- ←↑ Christmas Fayre
- ← Fun Village Quiz
- ←↓ The Village Players performed a bawdy bar room sketch at the 2008 US Independence Day Street Fayre
- ↓ 2006 Street Fayre with a French Bastille Day theme





Duck Race



Village Festival



Picnic in the Park



2016 Street Fayre



2020 Santa's Tour of Nayland

In 2008 the format changed to a Village Festival which included a series of events organised by various village societies including: a Duck Race in Fen Street, a Footpath Walk, Treasure Hunt, Bygones & Valuations, Flower Display, Art Exhibition, Barn Dance & BBQ, Picnic with music and sports and an Olde Tyme Music Hall evening.

A further change in format in 2010 introduced a two-day Fun, Food & Music Festival combined with a bicentenary celebration of the Constable painting in St James which saw non-stop entertainment. The weekend began with the Village Players presenting 'A Voyage Through the Musicals', there was excitement with a Duck Race, a Ready Steady Cook competition, stalls and musical entertainment from local groups and bands. In the church the Horticultural Society held a spectacular flower festival with 30 floral displays by village societies and businesses.

For Queen Elizabeth II's Diamond Jubilee in 2012 the weather was not kind but the celebrations began with the popular Duck Olympics and the planned Street Party was relocated to the village hall and two additional marquees to accommodate 450 villagers. There were children's amusements and activities including a heraldic shield competition. Spot prizes were awarded for best dressed table, best Jubilee shirt, lucky ticket draw, for the quiz and best window display. After lunch villagers stayed to watch the Thames Pageant screened in the hall. The Horticultural Society had arranged a fascinating collection of 1950s memorabilia in the church and Parish Recorder, Wendy Sparrow, also created a royal display with souvenirs and press cuttings featuring bygone coronations and jubilee celebrations.

During 2013-15 the summer event became a Picnic in the Park led by Iain Wright and Mandy Cook.

The Community Council's 50th Anniversary in 2016 was celebrated with a hugely successful 60s theme Street Fayre led by Claire Buller. There was plenty of music throughout the day with Nayland School Choir, Nayland Choir, the Village Players and the Caverners 60s band. Other features included vintage car rides, a shooting range, a community art project, photo booth, a children's roundabout and village societies ran stalls and sideshows. Visitors supported the theme with amazing 60s attire for the fancy dress competitions. There was a fun quiz, and plenty of children's entertainment including a dressing the doll competition. Two art exhibitions were held in St James's Church, a display illustrating the Council's history. The band played into the evening and villagers were dancing' in the street.

THE COVID-19 PANDEMIC INTERRUPTION

On 23rd March 2020 the Government announced the first lockdown in the UK due to the Coronavirus pandemic. Life became very different for us all but as a rural community we were perhaps luckier than many.

Residents turned to the internet for information and for shopping and local shopkeepers were a godsend. Locally the Community Council collated a team of volunteers willing to help others with errands, shopping, collecting prescriptions, etc. The Community Times helped relay this and other useful information, including local shopping options and delivery services. Local Facebook groups were set up which provided news, communication, advice and simply helped raised the spirits of residents. Nayland Bear appeared daily to provide humour and charm.

It was possible to run the calendar photographic competition online and produce calendars during the Covid years. The Community Council meetings were conducted via Zoom. It was necessary to cancel the Bonfire & Firework Display (never before in its 34 year history) and the Christmas Fayre. However the CC introduced the Christmas Trail and it has remained popular since then; consisting of Advent Windows, a Christmas Wreath Competition, and a Christmas Tree Trail. As the Christmas Fayre had to be cancelled Father Christmas was invited to tour the village in an open top vintage car giving out bags of chocolate coins to young residents of the village - this too was hugely popular and he now returns each year.

THE NAYLAND WITH WISSINGTON CALENDAR

A village calendar for Nayland with Wissington has been produced for the Community Council by a 'Calendar Team' since 2010.

Following a suggestion by Hazel Gardiner in 2008 a sub-committee was formed to bring the idea to fruition. The team is smaller now but from the beginning to present day Wendy Sparrow has provided historical details and Lorraine Brooks organised the competition and assembled the calendar; Claire Buller has now joined them with this project.

A photographic competition, open to anyone living or working in the parish, is held each April/May to generate the photographs for the twelve months and a front cover.

The stunning photographs which have been entered in the competitions make judging very difficult. During the early years a professional photographer undertook this task and a display was held in the Church Hall. During, and since Covid 19, the competition has been conducted online with residents able to vote for their favourite scenes.

With the support of sponsorship by businesses operating in the Parish, the assistance with sales at venues, such as village shops and society events the calendar has been a useful source of income for the Community Council. It has been printed at Spingold Design & Print located in the village so it really has been a community project.

THE COMMUNITY TIMES

The Community Times, which was first published in 1989 by the Community Council, was established to "keep the residents of the Nayland and Wissington community informed about the activities of the local clubs, associations and organisations in the village" and to "help promote the objectives of the Community Council".

In the early days it was not expected to generate any income; proceeds from a grand draw at the annual Fete were dedicated each year to funding the Community Times. Advertising was later introduced and the CT gradually became self-financing; it now generates a modest profit for the CC.

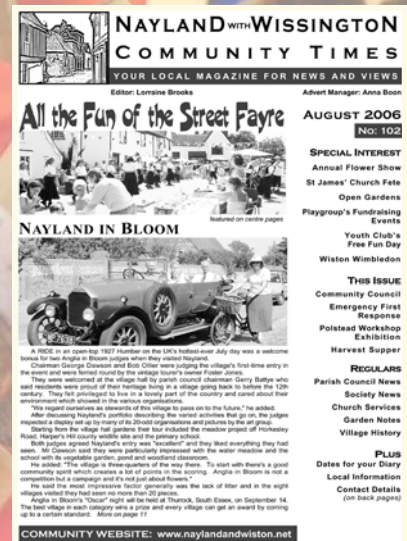
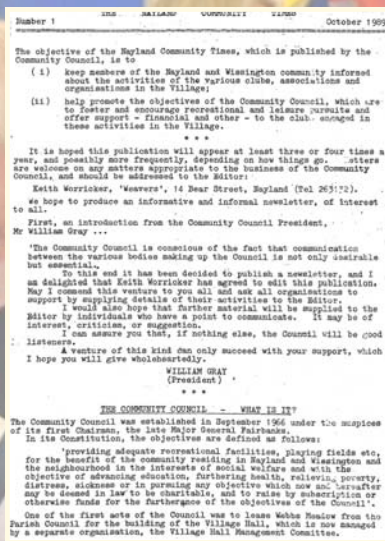
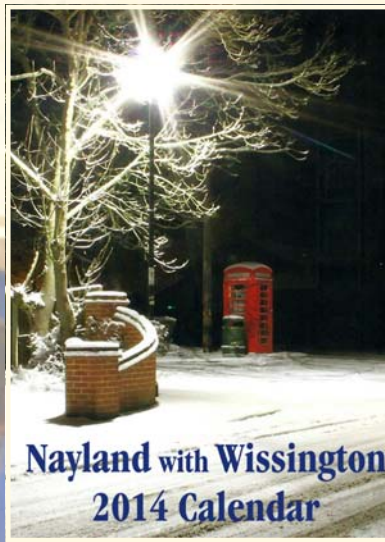
The Community Times has had three editors in its 25 year history. The first editor, Keith Worricker, established the bi-monthly newsletter and developed it into a successful publication. Upon his retirement in October 2002 Sarah Fogarty took the reins until February 2004 when they were passed on to the present editor, Lorraine Brooks, who developed it into a digitally generated magazine.

Of course, the Community times has a whole team of volunteers behind it. The regular contributors of articles, reports and copy and advertisers are vital to make the magazine of interest to readers and a proof-reader ensure copy has no errors. The CT would not reach residents' doors without the loyal team of distributors, currently led by Trevor Smy.

AWARDS

In 2013 the Parish Council entered the Community Times in the larger village category of the Suffolk Association of Local Council's (SALC) Newsletter of The Year Competition. It was judged as runner up to Elmswell.

In 2014 Nayland with Wissington Community Council were recipients of a Babergh Achievement Award. These annual awards highlight the work of people and groups who make a difference by giving up their time for the benefit of their local communities. Bryan and Jenny Smith, Tricia Hall and Claire Buller represented the Community Council at the awards ceremony.





Grants have included: Fairfield Recreation Ground equipment, Baby & Toddler Group, additional table for the Table Tennis Group, Nayland Meadow projects.



The community access defibrillators at the Village Hall and in Wiston are supplied and maintained by the Community Council.

COMMUNITY COUNCIL GRANTS

Having completed their initial aim of providing a village hall for the expanding village the Community Council continued with its aims and objectives "to provide adequate recreational facilities and other amenities for the benefit of the community".

In the last 60 years many local organisations have benefitted from Community Council grants. The highest recipient being the Village hall which had grants of over £60,000 since the 1990s.

The Parish Council, Woodland Corner/Playgroup, Primary School, Youth Club, Scouts & Cubs, Nayland Eagles FC, Nayland Rangers FC, Tapestry Singers, Church Hall, Village Players, Conservation Society, Horticultural Society, Art Group, Transition Nayland, St Mary's Wiston, Parkers Way Common Room, Over 60s Club, Luncheon for Over 60s, Nayland Choir, Table Tennis Group, Bowls Club, First Responders, Baby & Toddler Group, Save the Post Office Campaign, St James' Church, Lizzie's Fund, Nayland Meadow, Royal British Legion, Bear Street Christmas Lights, Nayland Bear, Water Level Gauge and the Horsecwatering.

The Community Council continues to monitor local permissive paths, it contributes to the community website, and maintains the community access defibrillators at the Village Hall and in Wiston.

Subject to available funding the Council is committed to maintaining and improving the range of activities and facilities within Nayland with Wiston for the benefit of its residents in line with the aims of its Constitution.

The Community Council is able to support local community or voluntary not-for-profit organisations for the benefit of parish residents. This may be to help fund a specific project, purchase of equipment or event or start-up costs.



COMMUNITY COUNCIL WEBSITE

www.naylandcommunitycouncil.org.uk

The Community Council's website gives further information about our aims, objectives, activities and latest news.

Records of our meetings - agendas and archive minutes - are available, as are details of grants awarded and our grant application form. There are pages for the Community Times - with archive copies going back to 2004 available to read - and the Village Calendar and its photographic competition and photo entries.

The History page has an in depth record of the Council's activities from the beginning in 1966 and there are some fascinating photo albums of our events... do take a peek.

Welcome

Latest News

Forthcoming Events

Our Meetings

Photo Gallery

Village Calendar

Community Times

Our History

Grants

Contact Us

Location

NAYLAND WITH WISSINGTON COMMUNITY COUNCIL

WELCOME

Established in 1966 the Nayland with Wiston Community Council is an umbrella organisation for some 22 Nayland Societies whose representatives, together with a few co-opted individuals, make up its membership.

In its Constitution the role of the Council is:

"to provide adequate recreational facilities, playing fields, playgrounds, Community Centres, and other amenities of a similar character for the benefit of the community residing in Nayland and Wiston and the neighbourhood in the interests of social welfare and with the objects of advancing education, furthering health, relieving poverty, distress or sickness or in pursuing any objects which now or hereafter may be deemed in law to be charitable by improving the conditions of life of the persons for whom the facilities are primarily intended."

Its main activities are organising:

THE COMMUNITY COUNCIL

Membership of the Council consists of representatives of our village societies and organisations as well as individuals with an interest in our community. An Executive Committee is elected each year at our AGM.

Our current Executive committee is: Rachel Hitchcock (Chair), Claire Buller (Vice Chair), Matt Cable (Treasurer), Bryan Smith (President) and Jo Metson, Vicki Sargent, Julie Clark, Iain Wright, Heike Ellwood, Becs Spendiff (Committee). There is currently a vacancy for the Secretary's post.

Nayland is such an active and friendly village and being involved in the Community Council is a great way to be part of it. We welcome new members to bring new ideas and support with popular village events, such as Bonfire Night and the Christmas Fayre, or to contribute new projects. It really isn't an arduous job - we meet every couple of months, provide a forum for all the village societies to come together and share what they are up to, fundraise to support village activities and societies and organise some of the key events in the village calendar. Participation is fun and rewarding and is a great way to make new friends.

Please don't be shy. If you think you can help or would like to find out more please contact:

Rachel Hitchcock on 07788 954309 or rachel_hitchcock@hotmail.com or Claire Buller on 07971 065856 or clairejbuller@gmail.com