



NAYLAND WITH WISSINGTON COMMUNITY TIMES

YOUR LOCAL MAGAZINE FOR NEWS AND VIEWS

SAVING THE POST OFFICE - INTO THE FINE DETAIL!



Following on from our last report, the lawyers for Nayland Community Store Limited and for Patsie Ford have been immersed in resolving matters of 'due diligence'. This has taken longer than anticipated but it is important that we go through all the finer points of detail so that we can make a recommendation to the village residents to invest with confidence.

As we go to print, we are continuing our discussions with Patsie Ford over matters of fixtures, fittings and other assets to be retained in the Post Office.

Our pledge total has increased to £57,091. However, there has been one material change to our situation as is explained on page 7 of this issue.

APRIL 2018

No: 172

SPECIAL INTEREST

Village Lunch: *The River Deben*

HortSoc AGM & Fun Quiz

Community Litterpick

Choir Concert '*Hallelujah*'

Plant Sale at Parker's

May Footpath Walk

Open Gardens

Hortsoc: Morning Market

Luncheon Club for Over 60s

Conservation: visit Belchamp Hall

Outing: Lullingstone Castle

Fundraisers: Coffee Morning

THIS ISSUE

Centenary of end of WW1

Public Meeting: Bridleway

Nayland Cinema Relaunch

Community Defibrillator

REGULARS

Community Council News

Parish Council Notes

Village Hall Meetings

Society News

Church Services

Garden Notes

Village History

PLUS

Dates for your Diary

Local Information

Contact Details

(on back pages)



MONDAY 28th MAY 2018

NAYLAND PLAYING FIELD

Gates open 1.30, Stalls open at 2pm - Full details on page 23

Nayland with Wissington Calendar

PHOTOGRAPHIC COMPETITION

Closing date for entries is Saturday 28th April

Photographs on Display on Monday 7th May

Call in for tea, coffee, biscuits and a chat - Church Hall 1pm-4pm

More info and an application form on page 11

ANNUAL PARISH ASSEMBLY

on Monday 23rd April, 7.45pm in the Village Hall
see page 6

View the CT in colour on: www.naylandcommunitycouncil.org.uk

NAYLAND WITH WISSINGTON PARISH COUNCIL

Extract of Draft Minutes for Meeting: 14th February 2018

(Minutes will be available on PC notice board in the High Street or www.naylandandwiston.net after the next meeting)

PARISH COUNCILLOR VACANCIES

The Vacancies had been widely advertised. The working group were to finalise the items for the New Councillor Handbook. A suggestion was made that this Council makes use of the Community Facebook Page.

PLANNING

The Planning Authority confirmed permission had been granted at **Arran House, 15 Stoke Road [DC/17/06149]** for a two-storey rear extension at **11 Elm Grove [DC/17/05940]** for a single storey side extension, at **100 Bear Street [DC/17/03996]** for change of position of summerhouse and Listed Building Consent at **The Mill House, Wiston Hall Lane [DC/17/05888/9]** for alterations and additions including the construction of pitched roofs, insertion/replacement of windows, small addition to rear, internal alterations, erection of first floor extension and erection of extension and alterations to summer house.

Discussing recent applications councillors had no objections to proposals at **6 Bear Street [DC/18/00089/90]** for a single storey rear extension with a suggested condition of lime wash render and lime wash paint finish to match the existing and at **29 Bear Street [DC/18/00136]** for Listed Building application for a through floor lift for disabled use and creation of new opening/door subject to approval by the Heritage Officer.

It was agreed to consider an application at **9 Bear Street [DC/18/00090]** for Listed Building Consent for a single storey rear extension, removal of internal walls and doors, blocking up of window and creation of WC between meetings to allow further members to scrutinize on-line.

Anchor Inn [DC/17/03612]: This re-consultation in respect of drawings PA02B, PA03B, PA08B received on 11.1.18. The following response was given between meetings to comply with the deadline:

The Parish Council has reviewed the new drawings which do not alter the views already expressed. Whilst the Parish Council is supportive of a successful Public House, it still objects to this application for the reasons already out-lined. Additional points we make are:-

- 1) A need for a full assessment by the Environment Agency of the changes proposed near the river bank which could affect the ebb and flow of the river and in light of the existing flood risk in the vicinity.
- 2) Public safety, including of children, should be assessed in relation to these proposals.
- 3) Road and Pedestrian safety and the impact to neighbours still hasn't been addressed in relation to the use and access of the proposed car park.
- 4) The visual impact in the AONB still needs addressing, comments by the Heritage Officer are relevant to this point.

In summary, we refer you to all our previous points and although supportive of a successful Public House, this Council continues to Object to this application in its current form.

Other Planning items: SALC were offering a Planning Workshop. The Chairman had challenged the lack of site visits by the Planning Authority and had received a response from the Chief Planning Officer. This had been circulated to members of the Parish Council. The Parish Council was not satisfied with the response and it was agreed to seek views from M Barrett, District Councillor

HOUSING NEEDS SURVEY

The Community Housing Fund application was submitted between meetings; approval is now awaited to move to the next stage.

ALLOTMENT AND GLEBE FIELD

Ian Harris had organised repairs to the Allotment gate. The amended fun run route to circuit the Glebe Field had been agreed in principle; a list of conditions which were approved. The Chairman will continue to liaise with the organiser. It was agreed for the Clerk to write to the farmer to inform him of

arrangements and ask for any implications in respect of sheep grazing. It was noted that the allotment judging will need to avoid the date of the fun run. The Chairman is to email potential dates for the annual allotment meeting.

FOOTPATHS

Complaints had been received regarding the bridleway between Gravel Hill and Cock Street. This is due to approved planning in Stoke by Nayland. The possibility of the bridleway being closed for a considerable period is anticipated.

HIGHWAYS

The Mill Street bollard has now been replaced. A new initiative from County Highways - Community Self Help - has been launched. The deadline for responses is 19th March.

STREET LIGHTING

In view of the lack of responses and action for some considerable time from the County Council, it was agreed to invoke the complaints procedure with the Cabinet Member.

VILLAGE HALL

Following damage to the hall from a booking last February, the court action was successful, however, enforcement action has not proved possible. Enquiries are being made towards reinstating the Village Cinema. A new specification has been drawn up in respect of the village hall roof and the Chairman is proposing to attend a Parish Council meeting within the next few months.

BURIAL GROUND

The quotes to re-surface the Burial Ground path were considered and the most competitive quote was approved. The Memorial seat repairs were authorised between meetings.

RECREATION AND OPEN SPACES

Gerry Battye had prepared the Play Equipment Action Plan. The Parish Council approved this plan and Gerry Battye will take forward with our grounds maintenance contract. Kathleen Cannings had researched the grants in respect of war memorials and it was noted that grants would not be available for cleaning. She is researching methods if a community initiative was organised. Ian Harris was investigating what is required at Wiston as this will require work and not just cleaning. It was agreed to include as an agenda item for March: "Consider Refurbishment of the Wiston War Memorial and the cleaning of the Nayland War Memorial". It was agreed to book the village tree inspection. It was agreed to obtain new dates for a meeting with the Environment Agency regarding the missing wooden structure.

FINANCE

In view of the Data Protection Changes, a Data Protection Officer will need to be appointed who cannot be the Clerk or a Councillor. Considerable costs have been quoted from independent service providers in this respect. More information is due from NALC on the subject as decisions are still being taken as to the best response by Parish Councils.

Charity payments were agreed. The Charity Budget will be split equally between the following four Charities: Babergh Homestart, Sudbury Citizens Advice, Suffolk Accident Rescue and Suffolk Age UK.

USEFUL SCC WEBSITES

Highways Reporting:
<https://highwaysreporting.suffolk.gov.uk/>

To check on roadworks:

<https://roadworks.org/>

Highway Maintenance Operational Plan:

<https://www.suffolk.gov.uk/assets/Roads-and-transport/how-we-manage-highway-maintenance/Suffolk-Highway-Maintenance-Operational-Plan.pdf>

NAYLAND WITH WISSINGTON PARISH COUNCIL

Notes on Meeting: 14th March 2018

(Minutes will be available on PC notice board in the High Street or www.naylandandwiston.net after the next meeting)

PUBLIC FORUM

Mike Hunter thanked Christopher Whybrow QC for his excellent introduction at the public meeting about the Leavenheath to Stoke by Nayland bridleway.

Referring to his comment during the public meeting that future access to Beachams Farm would be via Gravel Hill Glyn French, SCC Rights of Way Manager, was asked how this could happen bearing in mind the postcode for Beachams Farm is Cock Street and the Fire Brigade successfully checked that route. Glyn French said a way round that is being explored.

Asked why the Tendring Estate farm road had not been considered for some of the large construction traffic Glyn French said it had been designed for farm vehicles and SC Councillor James Finch said it would not be fair to ask.

It was pointed out that Mill Street Bridge needs protecting. James Finch said works to one side of the ancient bridge were carried out some years ago and the paved area preventing vehicle access gave protection to the other side. A recent survey shows attention is needed to the paved side.

FOOTPATHS & PUBLIC RIGHTS OF WAY

Discussing the destruction of the bridleway at Beacham's Farm councillors said they would like some reassurance regarding the rubbish in the hardcore used in the AONB. They were dismayed that due to the works not being declared full consultation including ecological report were not carried out. Martyn Booth said damage to the road network from construction lorries stretches along Wiston Road through to Bures. James Finch said a review of the planning application process is needed; details should be sent to SCC so this situation does not occur again. Graham Walker felt councillors should support Stoke by Nayland PC to put pressure on Babergh for reinstatement of the bridleway. Councillors were frustrated that despite objections from Leavenheath and Stoke by Nayland PCs and others with local knowledge this controversial application was permitted; they asked if anyone at Babergh reads submissions or makes site visits? John Ward, Leader of Babergh District Council, said everything is read, ultimately they make decisions on planning policies. They still make site visits if the ward member feels it is necessary.

Graham Walker said the PC spend substantial time considering planning applications, but the process is a mess and this example should be used as a learning exercise for what has gone wrong. Gerry Battye said lessons have got to be learnt; there is a dispirit, the process is not working, there is no respect for local knowledge. John Ward reiterated decisions are made on planning policy, they look at maps and the photographs submitted; the decisions may not be liked. Martyn Booth said he hopes Babergh listens to what we are saying. The PC will write to Babergh and SCC regarding their failings with the Beachams Farm application, initially by Babergh.

John Ward was invited to stay for discussions on further planning applications; he had a prior engagement but suggested they email him any concerns that arise.

HIGHWAYS

The Mill Street bollard has now been replaced; the bollards were installed to prevent vehicles mounting the pavement over the weak bridge in Mill Street.

Road works for stud removal are taking place on the A134 from Plough Lane to Assington from 28-30 March at 7pm to 7am.

Martyn Booth suggested a grit bin is needed at the junction by the Old Fox in Wiston. He said following clearance of a blocked stream near the Old Fox an old brick built gulley has been damaged by the works; it is quite a mess and has been reported twice.

SCC Highway had completed their proposals for speed reduction on the A134 from Nayland to Sudbury. The PC support the recommendation for 40mph along the Nayland to Honey Tye stretch.

PLANNING

The planning authority had confirmed consent had been refused at **6 Bear Street [DC/18/00090]** for listed building consent for erection of a single storey rear extension, removal of internal walls and doors, blocking up of window and creation of WC.

Consent had been granted at the **Anchor Inn, Court Street [DC/17/03612]** for erection of side and rear extensions, construction of timber decked seating area and timber walkway adjacent to the river Stour, use of land north of Horkesley Road as car park. Councillors felt clarity is needed on the effect this will have on Pop's Piece. Councillors were frustrated that not a single point of concern they raised had been taken on board.

Regarding recent applications the PC had no objections at **11 Gravel Hill [DC/18/00625]** for listed building consent to extend the ensuite bathroom by utilising space currently used by a cupboard. Councillors previously had no objections at **9 Bear Street [DC/18/00090]** for listed building consent for a single storey rear extension, removal of internal walls and doors, blocking up of window and creation of WC subject to Heritage Officer's assessment. There is an amendment to the application which will be considered between meetings.

Councillors will look at applications just received between meetings: at **Old Brewery House, 20 Church Lane [DC/18/00955]** for listed building consent for attic conversion, external alteration works including dormer window to rear elevation and conservation roof light to front elevation and at **6 Newlands Lane [DC/18/00958]** for listed building consent for insertion of one side ground floor wooden framed window.

Babergh have asked for a new application at **Rushbanks Farm, Wiston [DC/18/00884]** for agricultural determination for a storage building due to the height of the building in the vicinity of the airstrip. Councillors had strong concerns regarding the height; it is situated in a very elevated position which will impact considerably on the AONB. Concerns were expressed that farming activities had reduced in recent years and existing buildings on site were let out for non-agricultural purposes.

PARISH ASSEMBLY

This will be held on Monday 23rd April at 7.45pm. Topics will include the Housing Needs Survey and consideration of developing a Neighbourhood Plan. Councillors suggested Nayland and Wiston do not have the protection of the AONB that they had previously. The Police have declined the invitation to attend the Parish Assembly.

ALLOTMENTS & ALLOTMENT FIELD

The annual allotment holders meeting will be arranged. The gate to the allotments has been repaired but arrangements to fit the padlock need to be made. Arrangements with the organiser of the Nayland 10K fun Run to include a circuit of the field have been agreed; the farmer has been consulted and the allotment holders will be informed.

IN BRIEF

The Community Housing Fund grant to conduct the Housing Needs Survey has been approved; the survey will be launched at the Parish Assembly.

Mary George said the Community Council suggested promotion of the Emergency Assistance Plan could be incorporated with the Community Council's defibrillator training.

Patricia Fuller said attendance at the Village Hall Management Committee had been disappointing. The spring garden working party was scheduled for 17th March.

SCC and the Environment Agency are liaising regarding removal of the Willow tree on Caley Green which came down in Storm Fionn.

A seat in the Burial Ground has been repaired. Re-surfacing of the Burial Ground path has been instructed.

Colchester's Premier Roofing Specialist
Established over 30 years



EXTERIOR CARE

FLAT ROOFING - TILING & SLATING
New Roofs & Repairs
Chimney Work - Leadwork


An Established Local Family Business
QUALITY WORKMANSHIP GUARANTEED
FREE ESTIMATES & ADVICE
For Quality, Reliability & Service Please Call

01206 272453
MOBILE 07970 016234
5 Brook Cottages, Boxted, Colchester CO4 5TW


NEWTONS FARM
INDOOR TENNIS COURT

Wissington, near Nayland

PAY AND PLAY
NO MEMBERSHIP
BOOK ONLINE



www.indoortenniscourt.co.uk
01206 262453

Learn to drive 
with your local driving school

Rob Austin D.O.T A.D.I.

Fully qualified
12 years experience
Dual controlled car
Learn at your own pace
1st 2 hour lesson £25
£19 per hour there after

For more information or to book lessons call Rob on:
01206 262106
or: **07946 085338**

TOWN PRINTS

General Picture Framing

Also a selection of antique engravings of Colchester and District.

Foster Jones
Longwood Cottage,
Fen Street, Nayland,
CO6 4HT

Tel: 01206 262483

SUPER CLEAN
Carpet Cleaners

www.supercleancarpetcleaners.co.uk

Fresh, clean & healthy carpets and upholstery...
Just a phone call away!

Professional Service,
Super Results & Great Prices!



Call Today
07376 800 111

LOWER DAIRY FARM

BUY DIRECT FROM THE
FARM SHOP



GRASS FED BEEF
HORKESLEY PORK
FREE RANGE EGGS
JAMS & PRESERVES
NEARLY WILD CAMPSITE

Water Lane · Lt Horkesley · CO6 4JS
T: 01206 262314 
www.lowerdairyfarm.co.uk

 **Fix-A-Lock**
Locksmith - available 24/7

- Emergency LOCKSMITH - Wooden and UPVC doors
- All window & door repairs - handles/hinges/mechanisms/etc
- Replacement sealed units
- UPVC window & door specialist
- UPVC window & door installations
- CRB checked

 **Ted Blanchette**
07836 551 032
tedblanchette@tiscali.co.uk
Trusted and vetted

Stour Valley Landscapes

Gardening
Fencing
Landscaping
Tree & Hedge work
Handyman jobs

For a local, friendly & reliable service:

Tel: 01206 263629
Mob: 07801 430751

DS Clarke
Building Services

For professional - high quality work

General building work including:-
Extensions - Renovations - Brickwork
Landscaping - Roofing- Kitchens - Tiling
Plastering - Carpentry - Decorating etc

For a free, no obligation estimate, contact David Clarke on:

Tel: 01787 227943
Mb: 07867 851 137
dsclarkebuilding@yahoo.co.uk
7 Claypits Ave, Bures, CO8 5DA

AERIAL VIEW

TV, FM & DAB Aerials
Freeview, Freesat & Sky
Motorised Satellite
Satellite Broadband
Installations, Repairs,
Poor Reception & Upgrades
Extra Points, Magic Eyes
& TV Wall Mounting

Please call for other services

01787 311057
www.aerial-installers

HANDYMAN
based in Nayland

Gardening
Decorating
DIY
Odd Jobs
References available

Call Stuart Mosley
07760-236937
01206-262981

JOHN TOKELY
Painter & Decorator



Interior & Exterior Work Undertaken
Free Estimates
No Job too large or too small

9 Nayland Road, Colchester,
Essex CO4 5EG
Telephone: 01206 845665
Mobile: 07976 848310

TRG PEST CONTROL

Rabbits, Moles, Rats,
Mice, Wasps, etc
Efficient and
Economical Service

For Further information call
Terry Gowing
Tel: 01206 322776
Mobile: 07990 954192

NORTH ESSEX WINDOW CLEANING



Local and Professional Window Cleaning Service

Full Window Cleaning including doors, cills and frames
Cladding • Soffits • Fascia boards
Gutter cleans/clears
Conservatory cleans

Call Mick on 07912 660956
for a no obligation quote

TO ADVERTISE IN THE COMMUNITY TIMES

Contact Editor: Lorraine Brooks
01206 262807
lorraine.nayland@btinternet.com

Further details on back cover

YOGA CLASSES

Tuesdays
10am-11.15am
at Stoke by Nayland Village Hall

All abilities welcome.

Marianne Marshall (BWY)
on **07973 523211**

JP Services

Fencing - Horticultural Woodwork - Paving
Sleepers/Landscape timber
07970 559251 - www.jpsservices.co

Services:

- Sheds & greenhouses erected and repaired, bases laid
- Raised beds ■ Patios and paving ■ Artificial grass installed
- Traditional window boxes & planters
- Rustic structures: rose arches, pergolas etc
- Fencing, hedge laying ■ Gardens cleared
- NPTC chainsaw certification held
- Waste removed, EA registered waste carrier
- Flat pack furniture constructed ■ And much more

Sales: visit us at www.jp-services.info

- Sleepers/landscape timber ■ Oak tubs/barrels
- Steel barrels, ideal for storage, incinerators etc

COMPUTER DOCTOR CALL OUT

THE TIME THAT SUITS YOU!
COMPUTER MAINTENANCE & UPGRADES

- PC Maintenance
- Device Installation
- Software Installation
- Upgrading Operating Systems
- Improve Performance
- Internet & Mail Configuration
- Virus Detection and Removal



Contact: 07989 405791 (Nayland based)

Country Cars Private Hire

Personal & Professional Service Polstead Based

Local & Long
Distance

Airports - Theatres
Weddings - Hospitals



Contact Dave Howard

01206 262196 07767 076976

Mike Freeman's Window Cleaning Residential and Commercial



For an honest, fully insured, experienced window cleaning service, please call
Mike: 01206 503814
or **07590 396781**

Facias, Gutters, Frames, Cladding - all undertaken

13 Flanders Field, Colchester CO2 8BX

DAWN DALE

BEAUTY & RELAXATION THERAPY

AUSSER HOUSE • POLSTEAD STREET • STOKE BY NAYLAND

OFFERING: MANICURE INC GELCOLOR BY OPI,
PEDICURE, WAXING, AROMATHERAPY,
BODY TREATMENTS, FACIALS,
EYE TREATMENTS, MASSAGE
LADIES ONLY

OPEN: TUESDAY-SATURDAY 9AM-5.30PM

GIFT VOUCHERS AVAILABLE

PLEASE PHONE DAWN:

01206 262 118

dawncdale@gmail.com



STOURVALLEY

HEATING & DOMESTIC SERVICES LTD

- OIL CENTRAL HEATING INSTALLATION & MAINTENANCE
- COMMISSIONING
- HOT WATER STORAGE INSTALLATION
- UNDERFLOOR HEATING INSTALLATION
- WATER SOFTENER INSTALLATION
- FULL BATHROOM DESIGN & INSTALLATION
- DOMESTIC PLUMBING SERVICES

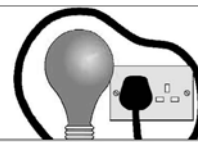
Local experienced established registered installer
For advice or a free estimate call MARK WARREN
on Mobile 07968 586613



A.S. Ironing Services

All your ironing needs
Occasional or weekly
Free collection and delivery
Fully insured
Established 2004

Tel: 01787 228036 after 4pm
or Mob: 07790 344090
Annette Southernwood



ELECTRICAL DGS

ELECTRICAL CONTRACTORS

Alterations - Rewires - Maintenance - Inspection & Testing

Local Electrician

City & Guilds
Qualified

Call Dan on 07500 038322
or Leavenheath 01206 262956
dan@electrical-dgs.co.uk



Free quotations available

CAN YOU SUPPORT THE NAYLAND 10K FUN RUN

The Community Council is delighted to be supporting this exciting event in the Nayland calendar. As well as raising valuable funds for the Colchester Hospitals Charity Cancer Centre Campaign a proportion of the profits will be donated to the Community Council to support village projects.

We hope there will be plenty of local runners of all abilities taking part – with 10k, 5k and 1k family fun runs there is something for everybody!

However, you don't necessarily need to be an athlete to support this fantastic fundraising opportunity. If running isn't for you, we also need a team of volunteers and marshalls to help on the day either at the village hall or as a marshall on the route, which takes in some of our best local scenery.

VOLUNTEERS ARE NEEDED

On Sunday 1st July to help at the village hall (with refreshments, registering runners, finishing line, handing out medals, car park, etc) or as a marshall on the route (from 9am to 12pm).

Also with setting up on Saturday.

Please let us know if you can help by contacting:
 Luke Rumbelow at rumbelow_2000@yahoo.co.uk or
 Rachel Hitchcock at rachel_hitchcock@hotmail.com.

"One of the hardest & best"
Came - 2017 runner

EventNation **NAYLAND 10K** SPONSORED BY PEAKE
 RUNNING FOR THE COMMUNITY

10k 5k 1k

The heart of Constable Country
 Competitive & family friendly
 + off-road Fun Run

- ✓ Improved multi-terrain route
- ✓ Chip timing for 10k & 5k
- ✓ Larger route specific medals
- ✓ Distance markers
- ✓ New running numbers & bag drop
- ✓ Strict starting times
- ✓ Fundraise £250 for CoHoC & run for free!
- ✓ Free event car parking

Feedback from 2017

"Difficult, enjoyable, challenge" "Difficult, hard terrain" "Tough, Bees, Stiles" "Challenging, hot, fun"
 "Friendly, organised, challenging" "Great first run" "Hilly, amazing, cows!" "Harder than expected"
 "Well organised fun" "Fun, memorable, pleasurable" "Really great event"

Donating to Nayland Community Council & CoHoC

900 entries available

Sunday 1 July 2018
nayland10k.co.uk

NAYLAND WITH WISSINGTON PARISH COUNCIL

ANNUAL PARISH ASSEMBLY

Monday 23rd April 2018

7.45pm at Nayland Village Hall

Affordable homes for local people. The Parish Council, in partnership with Community Action Suffolk, will be undertaking a survey of local housing needs to ascertain the kind of accommodation that is needed in Nayland with Wissington. Do you have younger members of the family who cannot afford to stay in the parish? Would you like to downsize to a smaller home? Should we have more rented accommodation at an affordable cost and more shared ownership homes?

The Parish Council would like to hear your views.

The confidential survey process will be explained and we hope that everyone will complete and return their questionnaire when it is distributed to households.

-----0-----

This is your annual opportunity to question your elected Parish, District and County Councillors who will be reporting on local issues and services

Footpaths and PROW, Open Spaces and Allotments,
 Highways maintenance, Traffic and A134 speed limit consultation,
 Planning issues, Social Care Provision, Schools, Council Tax and Precept

Nayland Community Store Ltd "Save Our Post Office" Campaign update 20th March 2018

The lawyers have been very busy sifting through the fine detail of the contracts. Much of this is routine but very necessary. We are now drawing up the formal Asset Purchase Agreement to agree with Mrs Ford and her solicitor.

There has been one significant change to our situation. A year ago we agreed with Mrs Ford a Heads of Terms for the lease between Nayland Community Store Ltd (NCSL) and Mrs Ford to continue to operate the Post Office in its current premises at 19 High Street. That lease allowed us an initial term of five years and a statutory right to renew under the protection of the 1954 Landlord and Tenant Act. Mrs Ford has now indicated that she is no longer happy with that proposal. NCSL has, therefore, had to put an alternative proposal to Mrs Ford for a ten year lease, with a rent review at five years but, importantly, that does not have the statutory right of renewal after ten years. In both cases, Mrs Ford has allowed a 'rent holiday' in the first year of the lease as her contribution to the refurbishment costs. We are awaiting the approval of that new situation from Post Office Ltd as the contract we were offered by them to operate the Post Office was based upon the original lease terms. At the point of agreement with them, Post Office Ltd will appoint a project manager to work alongside us through the final weeks of the process to the point of completion.

So again, we thank you for being patient as all these issues are resolved. The timeline for the next steps has been revised again:

1. Reconfirm Post Office contract with new lease detail and still conditional upon our ability to raise the necessary funds .
2. . Complete due diligence and agree contract for acquisition of assets with Mrs Ford by late March .
3. Exchange of contracts between NCSL & Mrs Ford by end April with legal completion conditional upon a successful share issue (say 10 working days after receipt of target funds) .
4. Distribute window stickers to Pledges to thank them for their support and also to advertise the upcoming share issue. Issue Share Prospectus (we hope during April/May) with funds to be submitted within 15 days. **As soon as we are able, we will announce a date for a public meeting for all to attend at the time of the share issue .**
5. Determine the stock profile for the non-Post Office retail business and establish staffing arrangements .
6. Following successful share issue proceed to completion of lease; transfer of business; stock valuation and payment for stock .
7. . Formal meeting with LEADER to accept grant (subject to signed PO contract and completion of lease with Mrs Ford).
8. Building works commence. We will attempt to keep the Post Office open during the renovations if possible. Train volunteer staff in parallel.

Thank you to everyone for your ongoing support and encouragement.

Simon Carter, Chairman, Nayland Community Store Limited



100th Anniversary of the end of the Great War

A team from Nayland and District Royal British Legion and other members within the Benefice are working on a plan to commemorate the end of the First World War at 11am on Sunday 11th November 2018.

The outline plan is a short service around the War Memorial during which all those from the Benefice who fell in the Great War will be remembered. This will be followed by a Service of Remembrance in the Church of St James in which there will be a talk on what the villages were like at that time and readings and music appropriate to the war and finally there will be a celebration in the village hall with more music from the village and school choirs. There will also be a static Display, finger buffet and cash bar. Nothing has been decided in detail and we are open to other ideas. **Please note it in your diaries and come along.**

As part of this event a number of ladies from the village have been knitting/crocheting poppies which will be displayed in the form of cascade in the church. Please note that finished poppies can be dropped off at the church hall on Saturday 21st April between 10am and 11am. This will be an opportunity for tea/ coffee and a chat. If you have not made a poppy yet, please call in for a pattern. There will be another drop off morning later in the year.



The team would like to hear from anyone who has photographs or documents relating to those who are named on our local war memorials. There was a good response for the event in August 2014 but we would like to expand the information that we have to include new stories. We would also like to hear about those who served during WW1 but returned home to our parishes after 1918 and the women in local families who did war work in agriculture, nursing or manufacturing. New research will be included in displays at the November event being planned and in a new commemorative booklet.

If you have any items that we could borrow to scan for our archive, or if you are able to scan them to send via email, please contact:
mary@naylandwithwissington.suffolk.gov.uk or a member of the Legion.

We want as many people as possible from the Benefice to be involved in this important event. Contact the RBL Branch Secretary, Andrew Gowen on: parkersag@yahoo.co.uk for more information.

COMMUNITY COUNCIL REPORT

AGM: 5th March 2018 Chair: Rachel Hitchcock 263169

www.naylandcommunitycouncil.org.uk

Rachel Hitchcock welcomed members to the meeting.

CHAIR'S REPORT: Rachel Hitchcock gave her report.

I am pleased to be able to mark another year of successful community activities and events all of which contribute to the rich tapestry that is Nayland life! I am delighted to be part of an organisation that brings together so many different people. The fact that we represent over 22 village societies just demonstrates what a vibrant village Nayland is – and long may it stay that way.

Thank you: Thanks, as always, are due to all members of the Community Council for their valuable contribution throughout the year and to the Officers and Executive Committee in particular - Ken Willingale, Bryan Smith, Julie Clark, Maggie Ryan, Lorraine Brooks, Claire Buller, Tricia Hall, Vicki Sargent, Colin Ramsell, John Parsonson, Colin Moule, Luke Rumbelow and Iain Wright as well as Parish Council Rep, Martyn Booth and Legal Advisor, Katie Wright. Special thanks to Lorraine Brooks who continues in her tireless efforts to co-ordinate us all; drawing on her legendary organisational skills – and no doubt her reserves of patience at times as well!

I will risk repeating myself from last year's report to emphasise the important part I believe the Community Council plays in village life: supporting and bringing together all the village societies; fundraising so as to be able to support many village activities and endeavours; providing essential communication through the Community Times; and organising events throughout the year that are a focal point of the village calendar. Thank you to all of you who have kept up this hard work over the past year. And thank you to all the village organisations and societies that provide activities and events that bring us all together (I think there really is something for everyone!) and maintain that community spirit.

Events and activities: *Thank you to everybody who turns out to help with these events and to our stalwart committee who always step in to take charge and make sure they can take place successfully.*

Nayland 10k Fun Run, July 2017 - A brilliant new event in the Nayland Calendar. Thanks to Luke Rumbelow for setting it up (and for joining the Community Council Exec!) and to everyone who turned out to help and participate. It was a glorious day and there was a great atmosphere with 600 runners taking part across the three distances - from club runners to families. Please put 1st July 2018 in your diary and come and join us again this year!

Bonfire Night, November 2017: An unprecedented Bonfire Night. People came from far and wide and Nayland nearly came to a standstill! Thanks to Iain Wright and the firework team for the fabulous display as well as everybody who helped on stalls and refreshments – a real team effort and a record breaking fundraiser.

Christmas Fayre, December 2017: Thanks to Father Christmas who supported this event as always. We also had a fine array of stalls provided by village societies (who were able to raise funds for their organisation) and external stallholders all of which added to the festive atmosphere. Nayland Primary School choirs and ukulele group also performed as they do at many Community Council events and we were delighted that they helped us get the Christmas festivities off to such a good start. Thank you everybody for your support.

Village Christmas Tree: Thank you as always to Fred Smith for supplying an excellent tree which provided a lovely, twinkly Christmas centerpiece and to Nayland Dental Surgery for supplying the electricity that kept it twinkling throughout Christmas. A big thank you too to the team who put it up in a full scale blizzard - a definite case of above and beyond the call of duty!

Quiz, February 2018: Another record breaker with 23 teams in attendance. Thanks to all who came along for an evening of fun and friendly competition!

Village Calendar: Well done to the team for putting together another fantastic Village Calendar – a great memento of Nayland past and present and extremely thoughtfully put together. Many thanks to the whole team and on their behalf I will take this opportunity to ask you to get snapping for next year's calendar as it is your photos that make the calendar possible.

Grants: One of the roles of the Community Council is to provide grants to village organisations and individuals whose activities support our constitution.

This year, amongst others, we were extremely pleased to be able to support the revamp of the Nayland & Wiston community website (naylandandwiston.net), ably taken on by Justin Dowding when Graham Griffiths stepped down. Thank you to Graham for his dedication over 14 years and to Tony Price and Terence Wilson for their contributions too. The website contains (almost!) everything you need to know about Nayland as well as the booking systems for the Village and Church Halls. If you haven't already, take a look at the stylish new site, which has now been configured for all devices, and thank you Justin for all your efforts.

Further grants included the Nayland Baby & Toddler Group, Luncheon Club for Over 60s Christmas Party and Nayland Community Store Ltd which has now been offered a contract to take over the Nayland Post Office.

Further details and our grant application form are available on the CC website at naylandcommunitycouncil.org.uk

Going forward: I am looking forward to another positive year for the Community Council. We are really well supported from around the village but we always welcome new input and ideas and of course, many hands make light work when it comes to putting together our calendar of events. Please get in touch and get involved in any way you can.

TREASURER'S REPORT: Maggie Ryan gave her report - see page 9. The accounts for 2017 had been examined and approved by Andrew Gowen and were adopted by the meeting.

ELECTION OF OFFICERS: The following were re-elected en bloc: **President** Ken Willingdale, **Vice President** Bryan Smith, **Chairman** Rachel Hitchcock, **Vice Chairman** Julie Clark, **Treasurer** Maggie Ryan, **Secretary** Lorraine Brooks, **Parish Council Rep** Martyn Booth. **Executive** Colin Ramsell, Tricia Hall, Luke Rumbelow. **Individual** Claire Buller, Vicki Sargent, Rachel Hitchcock, John Parsonson, Colin Moule, Iain Wright.

Rachel Hitchcock said that new members are always welcome.

AMENDMENT TO CONSTITUTION: Rachel Hitchcock advised the meeting of a proposal to discontinue the requirement of a Legal representative in the CC Constitution. Since 1966, when the Constitution was established, the CC activities have evolved away from the need for a legal representative. It was felt if the need for legal advice arose the CC would approach a suitable specialist. It was agreed that the position of Legal Representative would be removed from the Constitution.

MATTERS ARISING:

Nayland 10k Fun Run: Rachel Hitchcock said following the events success in 2017 Luke Rumbelow would be leading on a 10k, 5k and 1k Family Fun Run over off-road routes, starting from the Village Hall on Sunday 1st July. Planning is well under way, taking on board lessons learned last year. It is supported by the CC and they will benefit from a proportion of the profits. Promotion will appear soon including on www.nayland10k.co.uk The main appeal is for volunteers - please let Luke know if you can help: 07598 821663 or rumbelow_2000@yahoo.co.uk

Community Defibrillator: Rachel Hitchcock gave an update on this project; the Lottery grant application for a proposed community defibrillator to be sited at the Village Hall has been submitted. The Fire Service was awarded funding to install a defibrillator at Nayland Fire Station. Once the CC has secured the second defibrillator we will proceed with the Community Heartbeat

Income and Expenditure statement for the year ending 31st December 2017

Balance Sheet for the year ended 31st December 2017

| <u>INCOME</u> | <u>2016</u> | <u>2017</u> |
|-----------------------------------|---------------------|--------------------|
| Bonfire Night | £ 3,501.24 | £ 4,809.23 |
| Christmas Fayre | £ 510.50 | £ 653.15 |
| Community Times | £ 4,070.00 | £ 3,280.00 |
| Interest CCLA | £ 65.95 | £ 34.36 |
| Village Quiz | £ 350.00 | £ |
| First Response | £ 50.00 | £ |
| Village Picnic/Fayre | £ 1,108.68 | £ |
| Village Calendar | £ 1,856.30 | £ 1,453.80 |
| Donations other | £ 135.00 | £ 679.52 |
| Income Other | £ | £ |
| TOTAL | £11,647.67 | £10,910.06 |
| <u>EXPENDITURE</u> | | |
| Grants: | £ 6,713.28 | £ 5,623.07 |
| Community Times | £ 1,553.26 | £ 1,601.64 |
| Village Quiz | £ 99.96 | £ |
| Bonfire Night | £ 1,976.99 | £ 1,828.32 |
| Insurance | £ 392.01 | £ 388.93 |
| Christmas Fayre | £ 274.21 | £ 328.64 |
| First Response | £ 800.20 | £ 444.47 |
| Village Calendar | £ 729.34 | £ 732.56 |
| Misc. | £ 525.42 | £ 222.08 |
| Services Fund | £ | £ 121.50 |
| Street Fayre | £ 906.24 | £ |
| TOTAL | £ 13,970.91 | £ 11,291.21 |
| (Deficit)/Surplus for Year | (£ 2,323.24) | (£ 381.15) |

| <u>Accumulated Surplus:</u> | <u>2016</u> | <u>2017</u> |
|--------------------------------------------------------------------------------------------------------------------------------------------------------------------------------------------------------------------------------------------------------------------------|-------------------------|--------------------|
| As at beginning of the financial year | £ 22,152.07 | £ 19,828.83 |
| Add/deduct surplus (deficit) | (£ 2,323.24) | (£ 381.15) |
| Balance carried forward | £ 19,828.83 | £ 19,447.68 |
| <u>Represented by:</u> | | |
| CCLA Charities deposit fund | £15,556.90 | £10,591.26 |
| NatWest current A/c | £ 4,220.93 | £ 8,789.72 |
| Cash in Hand | £ 51.00 | £ 66.70 |
| Total Year to date* | £19,828.83 | £19,447.68 |
| *Included in Balance: | | |
| Services Fund | | £ 121.50 |
| Unencumbered assets, year to date, are: | | £19,326.18 |
| TREASURER | <i>Maggie Ryan ACA</i> | |
| CHAIRMAN | <i>Rachel Hitchcock</i> | |
| I have examined the books of The Nayland with Wissington Community Council (without carrying out an audit), and in my opinion, the accounts for 2016 represent a true and fair record of the Society's financial affairs. <i>Andrew Gowen A. G. Gowen ACIS (retired)</i> | | |
| Included in 2017 Balance: | Services Fund £121.50 | |
| Therefore, current unencumbered assets are | £19,326.18 | |

Trust (CHT) for installation and ongoing support. A training session will be held in liaison with CHT and the Fire Station. In the meantime we will raise awareness and details of access of the defibrillator at the Fire Station.

Community Post Office: Maggie Ryan updated the meeting on the current situation. Post Office Limited awarded the contract for continuation of the Post Office services to Nayland Community Stores Ltd (NCSL) in December. Since then we have been working on the detail of the contractual handover from the current Postmistress to the NCSL. Lawyers on both sides are completing due diligence on the contract to facilitate a successful completion, subject of course to a successful share issue, the launch of which will be announced publicly when all legalities agreed. Thank you once again to all who have pledged your support.

GRANTS & DONATIONS:

Luncheon Club for Over 60s: Olga Alexander had written to thank the CC for the grant towards their Christmas party which was very much enjoyed by all. Olga added the monthly lunches, Summer and Christmas parties are now held at Longwood Barn as numbers have dropped over time from 40 to about 28 so charging £3 per head does not provide much of a reserve for the party. The team of helpers are also generous providing the puddings.

Community Times: Lorraine Brooks said there is a whole team behind producing the Community Times every other month without whom village news would not reach your doormats; Colin Ramsell and the team of distributors, the proof readers, Pat Bray for village news and proof reading, Mandy Cook for assisting with the PC meeting reports, the advertisers who cover printing costs and provide valued income for the Community

Council and all those who contribute copy, photographs and reports on their societies. **Many thanks to you all.**

Many thanks to all who send in fabulous photographs of CC activities - this enables a photo gallery and albums of the events on naylandcommunitycouncil.org.uk

Village Calendar: Lorraine Brooks thanked all who support the calendar; the calendar team and helpers for their hard work, local businesses who sponsor the calendar, all those who enter their photographs and those who help with sales.

Plans are now in hand for the next calendar photographic competition and page sponsorship @ £25 is now being sought. Deadline for entries of photographs will be 28th April with the display on Monday 7th May; details and an entry form are available in the Community Times or at naylandcommunity-council.org.uk/Calendar.html

Recent Activities:

Nayland Fun Village Quiz: It had been a very successful evening with a real buzz. The quiz was very good with people coming from further afield to take part.

Forthcoming Activities:

2018 Dates: Calendar Competition Monday 7th May, Nayland 10K Fun Run Sunday 1st July, Fireworks Monday 5th November, Christmas Fayre Saturday 1st December. The next Fun Quiz will be held in February 2019

SOCIETY REPORTS

Parish Council: Mary George said the PC meeting on 14th March will be held at the Church Hall at 7.30pm (following the public meeting). The Annual Parish Assembly will be on 23rd April. They still have vacancies on the Council. The willow tree that came down across the river has been reported. **PAGE 9**

FUN VILLAGE QUIZ



A record number of 23 teams took part in a Fun Village Quiz organised by Nayland with Wissington Community Council.

The event, held in the village hall on February 2, was won by the Harrow Street Irregulars by a narrow margin of only two points. Five teams tied for second place.

Chair Rachel Hitchcock said: "It was a really enjoyable evening with lots of positive comments at the end. We had a good turnout from Nayland and beyond."

The quiz raised more than £350 for council funds.

The Community Council are very grateful to Rachel Hitchcock and her team of helpers for leading on the organisation of the quiz evening.

PUBLIC ACCESS DEFIBRILLATOR

This equipment can save vital time whilst waiting for the emergency services to arrive and can dramatically improve a person's chances of survival when administered within a few minutes.

There IS now a Public Access Defibrillator in Nayland.

It is located on the outside wall of Nayland Fire Station, Bear Street, Nayland CO6 4HY.



Please familiarise yourself with its location and let your friends, family and neighbours know too.

ALWAYS DIAL 999 IN AN EMERGENCY, THE CALL HANDLER WILL KNOW THERE IS A DEFIBRILLATOR NEARBY:

- The defibrillator is fully accessible, 24/7
- Training is not necessary as the device provides clear visual and audible instructions
- Get it to the patient whilst the 999 call is going on - using it quickly can greatly help the outcome when someone is in cardiac arrest.

Community Council continued.....

Village Players: Nick Moriarty said they are rehearsing for Agatha Christie's *The Unexpected Guest*; a murder mystery that is sure to keep you guessing. Performances will be on 22nd -24th March.

RBL: Andrew Gowen said the subject of their talk on 19th March, 7.30pm at the Church Hall, will be the Zeebrugge Raid on 23 April 1918; it was an attempt by the Royal Navy to block the Belgian port of Bruges-Zeebrugge. The British intended to sink obsolete ships in the canal entrance, to prevent German submarines from leaving port. They are planning visits to the Rix Stourgarden Complex on 9th May, a visit to the Joint Services Museum at Maldon on 18th July and a visit to Bawdsey Radar museum where Radar was first developed on 16th August. These activities are open to everyone.

John Partridge said 2018 sees the 100th anniversary of WW1 and they are planning to commemorate the event involving all parishes in the Benefice and hope everyone will wish to be involved. There will be a short service at the War Memorial, singing and readings in St James, and displays on how it affected the parish and refreshments at the village hall.

Choir: Rob Swan said their concert on 21st April will include a shortened version of The Messiah, works by Haydn, Mozart and Bach, and being joined by Nayland school choirs to perform the Hallelujah chorus. In July they will repeat the barbecue with light music and a sing-along. They are planning a big Come and Sing event in 2019.

Art Group: Colin Ramsell said one of their visiting tutors can no longer attend so they are looking for another. They hope to visit *Munnings & The River Exhibition* at the Munnings Gallery as part of the River Stour Festival.

Friends of Caley Green: Sally Dalton said SCC and the Environment Agency are liaising regarding removal of the tree across the river.

Book Club: Wendy Sparrow said they are currently reading *'Miss Garnet's Angel'* by Sally Vickers which they will discuss at their next meeting.

HortSoc: Trevor Smy said the Spring Show will be on 24th March, on 27th Ian Seager will talk on *'Wildlife Gardens and Conservation'*, their AGM and Fun Quiz will be on 17th April.

They are taking bookings for an outing to *Lullingstone Castle & the World Garden*.

Conservation Society: Mike Hunter said their AGM will be on 12th March when Mark Bills, the director of Gainsborough's House in Sudbury, will talk about the history of the house and its ambitious plan for the future. The Court Knoll Project has gained national interest and analysis will probably continue for a further 2 years.

Works to a bridleway between Leavenheath and Stoke, to enable development at Beacham's Farm, have caused wide concern. There will be a public meeting on 14th March, 6.30 for 6.45pm at the Church Hall to discuss this with SCC representatives, James Finch and Glyn French.

St James' Church: Chris Hunt said restoration work to the church and the clock has been completed. Pastoral care of the community continues but is now spread over the five churches. Chris appealed for anyone interested in bellringing to contact him. He pointed out that Parkers Way does still have some elderly living there; a warden didn't visit during the recent bad weather and he encouraged the community to consider checking on residents. Mary George said the PC had previously explored creating a Community Plan but volunteers did not come forward. Rachel Hitchcock suggested this could be explored again when defibrillator training is organised.

Women's Institute: Wendy Sparrow said in January Katie Wright spoke about *Well Being* and in February Chris Hunt enlightened them on *The Earthquake in Essex*. In March the Nayland branch will celebrate their 61st birthday with lunch at a local restaurant. In April they will host the Three Valleys Group meeting when Revd David Atkins will entertain us on *'It shouldn't happen to a Vicar'*.

Village Cinema: Karen Freeman said she is exploring the possibility of restarting the Cinema. She has been in touch with an expert in acoustics, who will visit to see how that issue can be resolved. The cinema has been missed.

AOB: Bryan Smith thanked the Chair and members of the Executive for their work throughout the year.

DATE OF NEXT MEETING: will be **Wednesday 2nd May** in the Church Hall at 8pm with Exec at 7.30pm

VILLAGE CALENDAR COMPETITION

Set out below are the competition rules for photographs submitted for the 2019 Nayland with Wissington calendar. Photographs taken in recent years and reflecting any of the 12 months of the year may be placed in the Community Times box in the Post Office. Spare application forms will be available in the box or on www.naylandcommunitycouncil.org.uk on the Calendar page.

We welcome photographs taken in recent years which represent our beautiful parish and our thriving community; these may include scenic views, architectural and natural features, street scenes and any seasonal or unusual aspects of the parish. Community events, such as the Fete, Open Gardens or Nayland 10K and society activities would also be appreciated. The images should be recognisable as being in Nayland or Wissington.

It is necessary to remember that photographs of children must have parental knowledge and consent and whilst it is fine to photograph people participating in a public event, any bystanders must be agreeable to publication.

Sponsorship is being sought from local businesses but is open to individuals. Anyone interested should contact Lorraine on 262807.

The Community Council look forward to your participation in the presentation of our 'Village' calendar. There is no age limit and we would love to have more entries from young people, the aim is to make it an enjoyable community project.

NB: Photographs will be mounted by the committee and on display in the Church Hall between 1pm-4pm on Monday 7th May.

Rules of Entry:

- The competition is open to residents of the Nayland with Wissington parish, and those who work in the parish or are active participants in parish societies.
- A maximum of 5 photographs per person may be entered.
- Photographs should be landscape orientation, 7" x 5" in size (or within 1/2" variance), have no border and be colour prints of images captured in Nayland or Wissington.
- Photographs must not be digitally enhanced.
- If photographs include children parental consent must be obtained by the entrant.
- The entrant's name and address should be included on the reverse of the photograph.
- Photographs should be placed in an envelope with a completed application form.
- If you require your photographs to be returned to you a stamped addressed envelope should be enclosed.
- Entries may be submitted to the Community Times box in the Post Office from the beginning of April. The closing date for entries is **Saturday 28th April**.
- Judging will take place on Bank Holiday Monday 7th May in the Church Hall. **The display of photographs will be on public show from 1pm-4pm.**
- The judge's decision will be final.



Photograph: Julie Clark Sponsor: Oldens Farm

October 2018

| | |
|--------|--------|
| 1 Mon | 17 Wed |
| 2 Tue | 18 Thu |
| 3 Wed | 19 Fri |
| 4 Thu | 20 Sat |
| 5 Fri | 21 Sun |
| 6 Sat | 22 Mon |
| 7 Sun | 23 Tue |
| 8 Mon | 24 Wed |
| 9 Tue | 25 Thu |
| 10 Wed | 26 Fri |
| 11 Thu | 27 Sat |
| 12 Fri | 28 Sun |
| 13 Sat | 29 Mon |
| 14 Sun | 30 Tue |
| 15 Mon | 31 Wed |
| 16 Tue | |

The footpath alongside the river behind the houses and cottages in Bear Street was the old towing path when the river was navigable and provides a pleasant stroll with a glimpse of gardens on the river bank. The striking red Maple tree in one of the gardens is a focal point in the autumn. On the other side of the path the edge of the Nayland Meadow is full of wild flowers in the spring and in the summer months sheep graze on the Meadow.

In days gone by, few people walked along this path and it was a wild area used only by fishermen who came from far and wide to catch the sea-trout fish in the river. Now fishing is for residents only but these days there are fewer fish to catch. The cottages and gardens in Bear Street, seen in the 1960s photograph, are recognisable but look quite different today. More houses have been built along this stretch of the river since then.

Application for Nayland with Wissington Calendar Photography Competition

Name: _____ Email: _____

Address: _____ Postcode: _____

Telephone: _____ No. of Photos: _____ Digital: Yes / No

| |
|-------------------------|
| Location of Photograph: |
| Scene 1: |
| Scene 2: |
| Scene 3: |
| Scene 4: |
| Scene 5: |

If non-resident your workplace or society/group in Nayland with Wissington: _____

Employer or Society Secretary's Name: _____ Tel: _____

RELAUNCHING NAYLAND COMMUNITY CINEMA

Thank you very much to all the villagers who kindly took a few moments recently to complete the cinema questionnaire. The results were most encouraging.

There were 72 replies with 69 in favour of relaunching the cinema with a monthly showing on a Friday at 7.30pm being the preferred option.

Of the three not in favour two were happy to go to film screenings at other locations. The third made no comments.

One reply requested that our Friday viewing did not clash with Polstead. This will be avoided as the objective of Nayland cinema is to widen the availability of community cinema and at the same time giving villagers the opportunity of avoiding the use of a car.

The majority were in favour of £5 a showing with a loyalty card scheme. This will involve a card the size of a credit card which will be stamped at each visit with every 5th film screening free.

The requested refreshments ranged from hot chocolate to ice cream, the range will largely be sourced from Rachel at Forget Me Not.

Unfortunately there was insufficient support for showing films for children in the school holidays but this can be reviewed at a later date should there be sufficient requests.

Some comments were made regarding the acoustics and associated sound issues. These important points will need to be resolved before the first film is screened.

Any volunteers to help prepare the Village Hall for screening, to screen the films and serve the refreshments before and in the interval would be appreciated.

The idea is to develop a film club which gives not only the opportunity to see the latest films but also the opportunity to meet up and catch up!

Any film requests or other suggestions to Karen Freeman at karenfreeman@suffolkonline.net

Please look out for posters for the first film which will be screened free of charge.



NAYLAND COMMUNITY CINEMA LOYALTY CARD
GET A STAMP FOR EACH VISIT, AND YOUR 5TH AND 10TH VISIT ARE FREE OF CHARGE!



Nayland Over 60s LUNCHEON CLUB

A Monthly Lunch for Senior Citizens - From January 2018 held at Longwood Barn

Tuesday 27 March - Tuesday 24 April
Tuesday 22 May - Tuesday 19 June

Come along and join the friendly atmosphere for a chat with friends, old and new.

If you would like to join us for lunch just phone to let me know. If transport down to Fen Street is difficult telephone Olga Alexander on 263923 to see if we can collect you.



Monica and her famous smile, with Colin Ramsell enjoying a HortSoc outing

MONICA SCANTLEBURY

Shirley and the family of Monica would like to thank everyone who attended Monica's funeral and made it such a memorable occasion.

With special thanks for the help given by Kathy, Hazel, Denise and Ann. Also to the ladies who provided refreshments.

Finally, to the staff at Nayland House for the care given during her stay there.

Monica was born, lived and spent her last days in Nayland, the village she loved. Like her father, Bert Halls, she loved flowers, red poppies were her favourite, and when out and about would often snip off a cutting to root at home. She was well known too for her fear of thunderstorms!

Monica will be missed by her many friends and those she helped; she was often involved with the washing up for the Fete, village lunches and dinner parties. Being somewhat of an expert on what was going on and who's who in the village she always made a point of welcoming new residents.

Monica was a village character with a heart of gold and will be remembered by all who knew her.



STOUR BORDER Country Music Club

Nayland Village Hall 7.30 - 10.30

Admission, usually £5, doors open 7pm

No bar – please bring your own drinks.

Tea/coffee & light refreshments available

FRIDAY 6TH APRIL

**CHARITY DANCE: OVACOME CANCER
'Brian's Country'**

**SUNDAY 22ND APRIL
'Kalibre'**

Popular return for one of the top duos on the circuit

**SUNDAY 27TH MAY
'Brian's Country'**

A popular return for Brian Mann

**SUNDAY 24TH JUNE
'Double Barrell'**

Last opportunity to this popular duo before they retire

Plant Sale

at Parker's, 43 Bear Street

SATURDAY 5th MAY
9am to 12 noon

Now is the time to fill in the gaps and replace all those plants that failed to survive the winter. We have masses of well established plants and shrubs and bedding plants: Salvias galore, delphiniums, wallflowers, marigolds, cosmos, cornflowers and so on.
All at very reasonable prices.

Come and see. It is organised by the local branch of the Royal British Legion. All proceeds will go to the Church Hall and the local Services charity



The Village Lunch

Wednesday 18th April

11.45 am for 12 noon, Lunch at 1pm
Nayland Village Hall

Speaker: **Mark Mitchels**

"The River Deben"

One of the most perfect and beautiful rivers in England. A journey down the River Deben is a journey through history showing how the landscape has changed to support the needs of people.

Tickets: £12.50 will be available at the Post Office (afternoons only) from 19th March until 14th April unless previously sold out. Tickets are limited.

NAYLAND CHOIR PRESENTS

Hallelujah

Extracts from **Handel's Messiah** and other pleasing pieces by Bach, Haydn and Mozart

Soloists **Nick Allen** and **Sean Moriarty**

Organist **Tom Cogan**

and the children of **Nayland School Youth Choir**

Musical director **Emma Bishton**

St James' Church, Nayland

Saturday 21 April 2018. Concert starts 7.00pm

Tickets **£10** (U16s free)



Tickets available from choir members from Nayland Post Office, on the door or call 07954 334548

visit naylandchoir.org
email naylandchoir@gmail.com
follow us on twitter [@naylandchoir](https://twitter.com/naylandchoir)



WoodlandCorner



EASTER HOLIDAY CLUB

on Wednesday 4th, Friday 6th,
Monday 9th and Thursday 12th April

9am - 4pm £20 full day
Aged 2 – 11 years

Two year olds must be already attending
Pre-School at Woodland Corner

Sibling discounts available

In the grounds of Nayland Primary School,
Bear Street, Nayland, Colchester CO6 4HY

For further information, contact Woodland Corner
tel: 01206 263054 e-mail: woodlandcorner@outlook.com
web: <http://woodlandcornernayland.blogspot.com>
Registered Charity 1168815

Nayland Baby & Toddler group

Bring your child, trained or not, to the Nayland playgroup.

Great for:

- exercise & agility
- sociability
- obedience(!)
- healthy treats

Fridays during term time,
9.30am - 11.30am at
Nayland village hall.



NEW activities for the Spring Term

Saturday 16th June 2018

Nayland Primary School HSA
SUMMER FETE
in the grounds of
Nayland Primary School
10am - 12 noon

Nayland Primary School HSA
& Woodland Corner
Hosting
POP UP CIRCUS
on Nayland Village Hall Playing Field
Shows from 1pm onwards

Cheerleading & Animal Visitors

Zippy Dipper, Face Paints, Tombola, Raffle

Inflatables, Refreshments & Games

£6 per person
Under 3's free
£7 on the door

* Tickets on sale in local shops *
details to follow
Ticket enquiries - contact:
naylandcircusfundraiser@gmail.com

& lots more

Nayland-with-Wissington Conservation Society

Registered Charity No. 268104

Visit to:
BELCHAMP HALL
 NEAR SUDBURY



WEDNESDAY 16th MAY
 starting at 2.30pm

The tour, of the Queen Anne period house, takes approximately one and a half hours. After the tour visitors are invited to walk in the gardens and will also enjoy tea or coffee and cakes. Members will make their own journey to the Hall and full details of the route will be supplied. The cost is £17 per person and as we are limited to 20 visitors, early booking is recommended.

If you are interested in the visit please contact Mike Hunter on 01206 264100 or email mikejphunter@gmail.com

www.naylandconservation.org.uk

Nayland - with - Wissington Conservation Society

www.naylandconservation.org.uk

Registered Charity No. 268104

**NAYLAND
 OPEN
 GARDENS**

**SUNDAY
 10th JUNE
 2018**



If anyone would like to include their garden on the list, please contact Mike Hunter on 264100 or Jill Slater on 262145

Nayland-with-Wissington Conservation Society

Registered Charity No. 268104

PARGETTING

Speaker: Bill Sargent



MONDAY 25th JUNE

7.15pm for 7.30pm
 Nayland Village Hall

All are most welcome

www.naylandconservation.org.uk

**NAYLAND
 COMMUNITY
 LITTERPICK**

Saturday 14th April

Meet at 1pm
 at the Village Hall Car Park

All welcome to help collect litter from village and footpaths.

Equipment provided but please wear gloves.

Contact mary@naylandwithwissington.suffolk.gov.uk or 01206 262712 for more information

Nayland Fundraising Committee
Invite you to a

COFFEE MORNING

at 21 Court Street, Nayland
by kind invitation of Mr & Mrs M Cullen

Saturday 28th April
from 10am



In aid of
Sudbury Newstalk
Charity no 284646

The charity records local news and magazines for the visually impaired in and around Sudbury and is run entirely by volunteers.

Stalls selling:
Home made cakes & savouries.
Gifts. Plants. Raffle.

Please come and support us.

Nayland with Wissington Conservation Society
Registered Charity No 268104



Nayland & District Horticultural Society

AGM & FUN QUIZ EVENING

Tuesday 17th April

7.30pm - Church Hall

All welcome

Come along and see what a friendly bunch we are!

Following the brief formalities, there will be refreshments and a fun quiz with horticulture in mind.

For those interested in becoming a member, membership is available for £3 or £5 for joint.

MORNING MARKET

Saturday 19th May

9.30am to noon

Church Hall

- ★ Plants including bedding & vegetables
- ★ Home-made cakes and preserves
- ★ Coffee
- ★ Raffle (draw at 11.30am)

Donations of items for sale or raffle prizes would be very welcome and may be brought to the Hall from 8.30am on the Saturday morning or left with a committee member during the week before the event.

www.naylandhortsoc.org.uk

SEE IT, SNAP IT, SEND IT...



NAYLAND MOBILE LIBRARY

Route 20 : High Street P.O.
Saturdays at 10am-11.15am,
every four weeks

31 March - 30 April
26 May - 23 June

Route 9 : Parkers Way
Saturdays at 3.55pm-4.30pm,
every four weeks

14 April - 12 May - 9 June

Tel: 01473 263838
www.suffolklibraries.co.uk

Many thanks to John Milbank for sending these lovely seasonal scenes.

You do not often see Bear Street looking so tranquil with a dusting of snow.

Even the sad sight of the Willow tree which came down in January's storm Fionn looks magnificent once more thanks to the snowy conditions of the Beast from the East - a final bow before the tree is removed.

Thanks also to Trevor Smy who, below, captured a shot of Bryan Smith in a winter wonderland - it was fascinating how a leaking pipe at the allotment created this spectacle.

Thank you to everyone who has sent photographs in for this issue - do keep what you see coming to lorraine.nayland@btinternet.com. View the colour version of the CT at: www.naylandcommunitycouncil.org.uk/CommunityTimes.html

WHEELIE BINS & THE STREETScape

It is always a difficult task to blend 21st century living within an early medieval village and generally Nayland makes a very good job of it, but every now and again issues arise which impact upon our charming street scene. The most recent blot on the landscape is the presence of refuse and garden waste bins. Obviously it is expected they will be on view on the evening before and the day of collection, but sadly, some bins are left on the street continuously, even when the house owner has the facility to store them discreetly.

Special credit should be given to those occupants of Birch Street who have to pass their bins through their properties to gain street access. It is also a common sight to see garden waste bins left on the street for weeks at a time, usually when the house owner has misjudged the collection day and accordingly the bin is left on the street for a fortnight.

It is a great pity that the views of our delightful village can be spoilt by unthinking behaviour and it is to be hoped that this reminder may make residents think whether they might make a greater effort to remove the bins from sight unless it is impossible to do so.

Mike Hunter, Chairman, Conservation Society



HARE & HOUNDS LEAVENHEATH

traditional country freehouse with 3 real ales
pool table - open fire - beer garden & patio - play area

Summer Beer Festival

Thursday 2nd - Sunday 5th August 2018

10+ real ales, real ciders and craft beer

Live music and BBQ on Saturday 4th

SUNDAY ROASTS

(every week 12 - 3pm)

a choice of 3 meats or a veggie option starting at £10

Family platter £27.50 (enough meat and trimmings to feed 2 adults and 2 children)

BURGER WEDNESDAYS (6 - 9PM)

A pint of your choice plus a choice of homemade burger with all the trimmings for just £8

OPENING HOURS

TUESDAY, WEDNESDAY, THURSDAY 12 - 3PM & 5 - 11PM

FRIDAY & SATURDAY 12 - 11PM

SUNDAY 12 - 10PM

CLOSED ALL DAY MONDAY

FOOD IS AVAILABLE

TUESDAY - SATURDAY 12 - 2PM & 6 - 9PM

SUNDAY 12 - 3PM



www.hareandhoundsleavenheath.co.uk 01787 212396

M & J REGAN

Building Contractors

A local family company who have been trading in the area for over 35 years.

01206 264019

07803 604254

m.regan3@sky.com

JMAC INTERIORS

Specialist Painters & Decorators

Est. 1997



- ✘ All Interior and Exterior Work Undertaken
- ✘ Specialist in Period & Listed Properties
- ✘ Wallpaper Hanging to the Highest Standards
- ✘ Restoration of Ornate Cornices & Ceiling Roses
- ✘ References Available
- ✘ Fully Insured

Contact: Jeff Macdonald

Tel: 07778 031505 - 01787 224674

Email: jmacinteriors@aol.com

www.jmac-interiors.co.uk



Nayland House Off Bear Street Nayland CO6 4LA

We offer long and short term care for elderly and dementia residents in our beautiful home set in the heart of the village

You are very welcome to visit – come and see our excellent facilities

For more information please telephone:
01206 263199

TURNER & MAY LIMITED

Plumbing and Heating Engineers

General Plumbing
Central Heating Installation
Energy Efficiency Boiler Installation
Boiler Maintenance
Underfloor heating
Water Softeners
Bathroom Design & Installation
Free Estimate

We offer a fully comprehensive range of domestic plumbing and central heating services.

Excellent local reputation

Over 25 years of experience

Tel/Fax: 01206 263392

Mobile: 07966 286603 / 07885 075031

Email: brian.tandmltd@gmail.com



N.P. & S.G. Evans Plumbing & Heating

Hill Farm, Wiston, Nayland, Colchester CO6 4NL
npsgevens@gmail.com

Tel: 01206 262091 Mob: 07979 535670

For all your plumbing & heating requirements.
Also guttering maintenance & replacement.

Water Lane ARCHITECTS

An RIBA Chartered Practice

- Architectural services for new and existing buildings
- Residential and commercial schemes
- Designs for greater sustainability — AECB member

Call: Chris Exley ARB, RIBA, AECB on: 01206 271617
info@waterlanearchitects.co.uk 01206 890178
www.waterlanearchitects.co.uk 07827 414847
Water Lane, Little Horkesley

Evolve LANDSCAPES

Landscape design & build

- > Landscape Design
- > Construction work
- > Paving / driveways / patios / paths
- > Fencing / decking / garden walls
- > Pruning / hedge cutting
- > Tree felling / clearance
- > Regular garden maintenance

T: 01206 263813 M: 07841 625358
E: info@evolve-landscapes.co.uk
www.evolve-landscapes.co.uk



Shimmy, Shake, Wiggle & Giggle Dance Fitness

FunDancing Classes

Nayland Village Hall

every Wednesday at 10:00

spaces are limited - to reserve yours

**Call Janet on
07506 350 455**

classes also held in:

- Boxford
- Capel St Mary
- East Bergholt
- Nayland
- Stratford St Mary

janet@fundancing.co.uk
www.fundancing.co.uk



Nayland Dental and Cosmetic Clinic



18 High Street, Nayland, Suffolk CO6 4JF

Family Dentist Hygienist
Facial Rejuvenation Smileign

PRIVATE DENTISTRY AT AFFORDABLE PRICES

Free examination for children of school age with full paying adult

DENPLAN AVAILABLE
SMILELIGN CONSULTATIONS
TEETH WHITENING - only £199

**FREE ORAL CANCER SCREENING
GIVEN WITH EXAMINATION**

Early Morning & Late Evening Appointments Available

Call us to book an appointment or request an
information pack **01206 262262**

www.naylanddentalclinic.co.uk



ANCHOR INN NAYLAND

*Perched on the riverbank, the Anchor has been
serving the Dedham Vale for over 500 years.
Isn't it about time you joined us?*

anchornayland.co.uk

01206 262313 | Court Street, Nayland CO6 4JL

PETER MOSS & SONS

Providing all aspects of vehicle maintenance



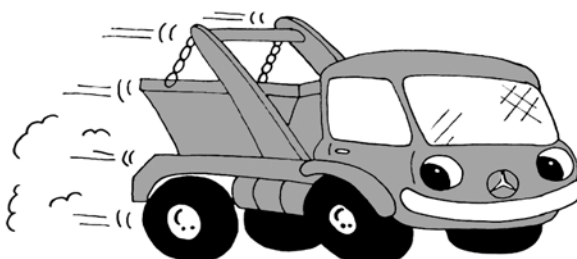
68 Bear Street
Nayland
Tel: 01206 262866

SERVICING ■ REPAIRS

BUGG SKIP HIRE

For All Your Waste Disposal Requirements

- Excellent Service
- Lowest Prices
- Various Sizes to Suit Every Situation



Tel: 01206 262605

www.buggskiphire.co.uk

The Woodyard, Gravel Hill, Nayland, CO6 4JB



Gladwins Farm

Harpers Hill

Nayland

Suffolk CO6 4NU

Tel: (+44) 01206 262261

Fax: (+44) 01206 263001

E-mail: contact@gladwinsfarm.co.uk

www.gladwinsfarm.co.uk

- Award-winning self-catering cottages – sleeping 2–8 people. Charming conversions of period farm buildings, some are designed to be accessible by accompanied disabled visitors, some luxury cottages with private hot tubs.
- Moving house? Longer tenancies in the Winter period can be arranged.
- Swimming lessons throughout the week. Fully air-conditioned in a lovely building. Available for childrens' parties.
- Guests have the use of the pool, sauna, hard tennis court and playground. The lake is stocked with coarse fish. Pets welcome.

Brochure and details available from Stuart and Susie Bradshaw. 01206 262261

www.gladwinsfarm.co.uk



OPTIMUM
Architecture Ltd

NEW BUILDS • EXTENSIONS • RENOVATIONS

**ARCHITECTURAL SERVICES FOR
RESIDENTIAL AND COMMERCIAL BUILDINGS**

Tel: 01206 262697
E-mail: info@optimum-architecture.co.uk
www.optimum-architecture.co.uk

Optimum Architecture Limited
Nags Corner, Nayland, Nr. Colchester CO6 4LT 

GET IT RIGHT FROM THE START

GARDEN DESIGN
BORDER DESIGN
PLANT SOURCING

GARDEN OVERHAUL

GARDEN GIFT VOUCHERS

Give your garden the makeover it deserves!

We are a local garden design company and can offer a complete design, construction and maintenance package or just a planting plan for a single border.

WWW.ZINNIADDESIGN.CO.UK



Call Angela for a consultation:
01787 212264
07974 375254




BARNEY THE DECORATOR
YOUR LOCAL PAINTER & DECORATOR

Quality Decorating Applied To Last!

Fully Insured - Friendly Professional Service
No Job Too Big or Too Small

Call Barney for your free quote: 01473 822787 or 07856 540664
or email: barneythedecorator@gmail.com 37 Malyon Rd, Hadleigh IP7 6RE

SALES & LETTINGS

Carter Jonas combine extensive local knowledge with a network of national offices including 12 in central London.

Whether you are a buyer, seller, tenant or landlord please call us to discuss your property needs.

SUFFOLK
01787 882881
suffolk@carterjonas.co.uk
St Mary's Court, Little St Mary's,
Long Melford CO10 9LQ
carterjonas.co.uk/suffolk

Carter Jonas

Tim Allen & Son



Established 1994

Windows, Doors & Conservatories
Hardwood, Aluminium & PVCU
Fascias, Soffits, Bargeboards, etc
Also Extensions & Garden Rooms
Replacement Sealed Units

Tel: 01473 827086

Mob: 07885 437409 or 07909 091691
timallenwindows@gmail.com





Insurance Backed Guarantee



THE OLD CHAPEL, NAYLAND

is a new venue to hire for private events, such as, musical recitals (Blüthner grand piano available), exhibitions, corporate events, family parties and other social occasions. Dining area and catering facilities included.

Contact Maggie East for details
on 01206 263291
or maggie_east@yahoo.com



Nayland & District Horticultural Society
Coach outing to

Lullingstone Castle & The World Garden

Wednesday 6th June



Set within 120 acres of beautiful Kent countryside, Lullingstone Castle is one of England's oldest family estates, dating back to the time of Domesday.

The garden pays homage to the amazing achievements of Victorian and Edwardian plant hunters and contains many rare and important botanical specimens.

Coach leaving Nayland 9am, return from Kent 4:30pm.

The cost will be £25 to include travel and entry.

Refreshments are available. Open to non-members.



Early booking is advisable. Booking forms can be returned to the HortSoc box in the Post Office, or direct to Trevor Smy at 24 Harpers Estate.

Cheques payable to *Nayland & District Horticultural Society*.

For more information, visit www.naylandhortsoc.org.uk or contact Trevor on 262022 or trevor.smy24@gmail.com.

Lullingstone Castle & The World Garden Booking Form

I would like to book seat(s)

Payment attached: £.....

Name:

Tel:

Address:

Email:

Names of Guest/s: Where boarding coach: Stoke Rd / Parkers Wy / Harpers Est



NAYLAND PLAYING FIELD

GATES OPEN 1.30pm - STALLS OPEN 2pm

MONDAY 28th MAY 2018

The Victory Jazz Band

Raffle £150 1st Prize

Classic Vehicle Display

Children's Sports • Novelty Adult Sports

Tug-of-War • Sideshows for all ages

Stalls include: Plants, Jewellery, China, Toys, Vintage, Glass, Garden Tools

Ice Cream, Homemade Teas, Hot Dogs,
Strawberries & Cream

Admission: Adults £2, Children 50p, Concessions £1

FREE CAR PARKING

Many thanks to all our sponsors. All proceeds to St. James Fabric Fund

STALLS

We are always extremely grateful for anything you can spare to sell on the stalls. We would **love** any of the following:

- Plants
- Cakes
- Books
- Toys
- Glass and China
- Kitchen and Picnic
- Vintage
- Pictures & Soft Furnishings
- Gifts
- Bric a Brac
- Jewellery & Handbags
- Garden Tools/DIY
- Bottles for the Tombola
- China for the china smash

Cakes and biscuits would be much appreciated for the Teas, these can be left in the Village Hall on the day.

*Unfortunately, we **cannot** take clothing, luggage, electrical items or large furniture.*

Items can be left after 1st April

For location please contact:

Andora Carver 01206 262970

Lorna Burgin 01206 262161

Helpers are always very welcome.

Please contact the following:

| | | |
|---------------|-----------------|--------|
| Teas: | Terry Bannister | 262454 |
| Stalls: | Lorna Burgin | 262161 |
| Sideshows: | Lucy Carpenter | 263835 |
| Sports: | Lorna Burgin | 262161 |
| Field set up: | Stuart Bradshaw | 262261 |

Thank you very much for your support.

Last year's fete raised in excess of £14,000 again, just fabulous. All the proceeds go towards St James Fabric Fund and the repairs that are needed. We are so very grateful to everyone involved for yet another very successful event and hope this year's fete will be another fun afternoon for everyone – whatever the weather!

Help setting up the field in the morning and with teas and sideshows – even for just an hour or so – would be very much appreciated.

The success of the fete is due largely to the items so generously donated, for which we are extremely grateful, to the very many volunteers who put in so much effort and energy into both the preparations and work on the day, to the sponsors and to everyone who comes along and participates on the day

"Yet another superb safari, tailor-made for us by Jane"

Birding, horse-riding, photographic, 4x4, walking. Bookings ATOL / AITO bonded.



Jane Walker, Independent Safari Consultant

Farthing Hall, Nayland with Wissington

www.safari-consultants.com

01206 262352, JaneW@safari-consultants.com



Nayland with Wissington Society News



ROYAL BRITISH LEGION

Secretary: Andrew Gowen 262534 parkersag@yahoo.co.uk Chairman: John Partridge 263733

Our meeting on 19th March was preceded by a interesting talk by Peter Down from Needham Market RBL on the Zeebrugge Raid on St George's Day (23rd April) 1918. The objective was to block off the German Submarine Pens that were causing so much damage to British Merchant Shipping.

The following visits are being organised:

- A visit to the Rix Stourgarden Complex on 9th May
- A visit to the Joint Services Museum at Maldon on 18th July.
- A visit to Bawdsey Radar museum where Radar was first developed on 16th August

All these visits are open to non RBL members. Contact Andrew Gowen if you are keen to join us.

Our next meeting will be in the Church Hall at 7.30pm on 14th May.



THE VILLAGE LUNCH

Jo Murrison 262369

The next Village Lunch will be held on Wednesday 18th April when our speaker, Mark Mitchels, will be returning by popular demand to talk on 'The River Deben'. *One of the most perfect and beautiful rivers in England. A journey down the River Deben is a journey through history showing how the landscape has changed to support the needs of people.*

The lunch will be held in the Village Hall, 11.45am for 12 noon, with lunch at 1pm. Tickets at £12.50 will be available at the Post Office (afternoons only) from 19th March until 14th April unless previously sold out. Tickets are limited.

The autumn Village Lunch will be on Wednesday 17th October.



NAYLAND AND DISTRICT WOMENS INSTITUTE

President: Jeannette Finch 262993

Secretary: Lorna Rumsey 01787 211975

We have had two very interesting talks so far this year; Katie Wright told us about *Well Being* and gave us some helpful advice. Last month Chris Hunt talked about *The Earthquake in Essex*, also known as the Great English earthquake, occurred on the morning of 22 April 1884 at 09:18. Measuring 5.1 on the Richter scale caused considerable damage in Colchester and the surrounding villages including damage to St James' Church and the Congregational Church in Stoke Road.

Looking forward, we are all off out to lunch at Assington Barn, to celebrate our 61st Birthday in March. On 16th April we have Revd David Atkins, telling us *It Shouldn't Happen To a Vicar* and on 21st May we will have our Annual Meeting and Resolutions. On 18th June Tony Chibnall from SSAFA the Armed Forces Charity will be coming along to talk to us.

We would love to see anybody who would like to be a guest, at any of our meetings. We are always looking for younger members to take the W I forward for the future.

Our meetings are held in the Village Hall on the third Monday of the Month.



NAYLAND WITH WISSINGTON CALENDAR DISPLAY OF PHOTOGRAPHS

Monday 7th April

1pm to 4pm in Church Hall

Come along and browse the display of photographs taken in our picturesque parish for this year's calendar competition as well as albums from previous years.

Scrapbooks and photograph albums relating to the history of the Community Council will also be on display to evoke fond memories of times past in our community.

Do pop in for refreshments and a chat

Conveniently timed for those going on the May Day Walk





NAYLAND & WISTON COMMUNITY WEBSITE

naylandandwiston.net

I'd like to encourage Nayland and Wiston village organisations who have trips and other events planned to register them on the What's On page for the village. This will help reduce the chance of events clashing. The calendar doesn't just show events at the Village Hall and Church Hall. It can also be used for events at the churches, events outside, as well as society away-days.

Events can be booked several years in advance.

If your organisation would like to register an event which is not taking place at the Church Hall or Village Hall, please get in touch with Justin at jpdowding@gmail.com or 01206 262217



NAYLAND BOWLS CLUB

Secretary: Eva Rolfe 263151

January 18th saw us away at Copdock; the first session saw one heavy loss and the other game was 7-7 with one end left. Unfortunately our number 2 knocked the jack off which gave the opposition 2 shots and the win in the second session. Both teams managed to win so 4 points were scored. On the 24th Gt Blakenham came to us; we managed to win the first two games with an 8 shot advantage. The second session saw one team win and after a close game the second team lost but we still had the shot advantage so it was an 8-2 win.

On February 14th we went to Tuddenham; those carpets are very fast. The first two teams struggled with the weight and lost. In the second games one team did manage to win so 2 points were gained. On the 21st Barking come to us; once again the first teams lost but one of the second teams managed a draw so 1 point was gained.

Our first game in March was postponed due to the weather but, March 9th saw us away at Bealings; the first two teams lost heavily the second session saw one team win and after a close game the second team drew so 3 points were gained.

At the moment we are just above the relegation zone, so we really do need to score some points.

Fixtures: April: 4th Tithe Barn away, 11th Belstead home, 18th Old Felixstowe home

Sylvia Bond



VILLAGE PLAYERS

Chair: Justin Dowding 01206 262217
jpdowding@gmail.com

www.villageplayers.co.uk

Membership: Jill Fernandez 07979 988434
jillyfern@gmail.com



We are just four days away from curtain up (as I write this) for our whodunit: Agatha Christie's 'The Unexpected Guest', directed by Mike Poole. The splendid set is complete (all credit going to Nick Moriarty for the design) and the finishing touch will be a Chesterfield sofa, which is kindly being lent to us by the Anchor Inn.

If you're reading this before our final performance, it's not too late to get tickets! We're performing on March 22 – 24 (Thursday to Saturday) and tickets are on sale online, at the Post Office and on the door.

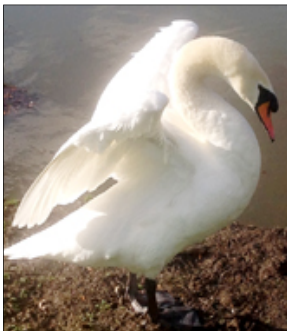
After two plays almost back-to-back, many of us in the Village Players will be looking forward to a quieter period before our winter production. We will be performing a pantomime in December, and although nothing is yet set in stone, the plan is to perform Peter Pan. Our Director will be Emma Wallis (who directed Cinderella in 2016) and we will be holding auditions in June.

There will be more details on the auditions in the next edition of the Community Times, and also on our website.

Diary Dates: We will be holding our AGM at the Church Hall on Wednesday, April 25th. There will be drinks and nibbles from 7:30pm, with the meeting getting underway at 8. Everyone is welcome! We will also be at the Anchor on May 3rd at 8pm for our regular meet-up. If you'd like to find out more about the Village Players, get involved - or just have a drink and a chat, please do come along!

As always, for more information on the Village Players, including photos of previous productions and tickets to performances, please head to www.villageplayers.co.uk.





THE FRIENDS OF CALEY GREEN

Sally Dalton johnansal@live.co.uk 262675
 Linda Allen timallenwindows@gmail.com 01473 827086

Despite the bouts of winter weather spring has finally arrived. The crocus and snowdrops have made an appearance and now the daffodils are in bloom.

We are keeping in touch with the environment agency. They are dealing with the willow tree that fell across the river during the storm. It looks as if the tree will be totally removed. It is probable that work will commence once the green dries out. The environment agency are in the process of making a decision as to whether they complete the work themselves, or use contractors.

DUCKS SWANS AND A GOOSE TOO!

Fact :- The mallard duck is the most abundant and wide ranging duck on earth

There has been lots going on over the past few weeks. The goose paired up with one of the cygnets and the two were inseparable swimming and dozing on the bank together.

During the second week of February the adult swans mated, and as if on cue all three remaining cygnets flew off and have not returned.

Now Spring is here the goose has returned to the bus stop where he remains from first light until dusk. He will stay there for several weeks. He is able to see his reflection in the glass and becomes quite territorial chasing off any ducks that venture too close.

The ducks have now paired up and have started to wander looking for nest sites. There are only a few pairs of ducks remaining on the green. Groups of ducks have been spotted on other sections of the river, in neighbouring gardens, and one duck was spotted walking along the pavement in the High street.



NAYLAND FUNDRAISING COMMITTEE

Secretary: Caroline Lowe 263852 caroline.m.lowe@btinternet.com

COFFEE MORNING IN AID OF SUDBURY NEWSTALK Charity no 284646

Our next Fundraising event is a coffee morning on Saturday April 28th 10.00 am at 21 Court Street by kind permission of Mr and Mrs M Cullen. Please keep the date free and come and join us for a sociable morning in a lovely house and garden. While enjoying a cup of coffee and cake you will also have the opportunity to purchase from our popular plants and home-made savouries and cake stalls. There will also be a gift stall and raffle.

We are raising money for Sudbury Newstalk who record local news and magazines for the visually impaired in and around Sudbury. The charity is run entirely by unpaid volunteers. It receives no regular financial support from local or national government and relies on fundraising, donations and legacies to keep the service going. Our donation will help towards the ever-increasing cost of production, replacement of equipment, administration and postage.

We look forward to seeing as many of you as possible on April 28th.



NAYLAND CHOIR

Chair: Rob Swan 07954 334548 rob.swan@tb9.uk
 Sec: Cathy Allen cathymargaretallen@gmail.com

www.naylandchoir.org
 Twitter at @naylandchoir

Our spring concert fast approaches - see page 13.

"Hallelujah" is a concert made up of a shortened version of The Messiah and works by Haydn, Mozart and Bach. The highlight of the Messiah is of course the Hallelujah Chorus where we will be helped by the Nayland School Youth Choir. Make sure 7.00pm on Saturday 21st April in St James Church, Nayland is entered in your diary!

Another date for your diary is 15th July in the Village Hall when the choir will be presenting an afternoon concert of light music (theme yet to be decided) and a barbecue. Those that attended last year's summer concert will know how much fun it was and will look forward to an excellent barbecue.

For anyone who might hesitate about classical choral music, this is a great opportunity to try singing with us. Rehearsals start on 7th June at 7.50pm in the school hall. As always, no audition required.



THE FRIENDS OF ST. JAMES' CHURCH, NAYLAND

Registered Charity Number 1052641

Chairman: Alan Edwards 262800 alan@edwards-online.net

The Friends AGM was well supported despite the terrible weather.

The main item of importance was the continuing Lavatory, Servery and Storage project. The Chairman reported that, after all the delays and finance problems of 2017, having got estimates, the project had been handed back to the PCC. Jon Pierson, their Treasurer, told the meeting that funds were now sorted out and a local builder, Harris Building, had been selected to do the work. They are planning to start in April and complete the work in 8 - 10 weeks.

In a further piece of good news, the PCC have raised a substantial amount from outside Charities, so the Friends will probably not be required to use all their funds. This means, of course, that the Friends will be able to support more projects to turn St James' Church into a venue better suited for events of all types.



NAYLAND CHURCH HALL

Treasurer Andrew Gowen 262534

ANNUAL GENERAL MEETING

At the annual meeting of the St James' Church Hall Committee:

The Chairman welcomed Dorothy Bishop as the new Hall Caretaker. She replaces Monica Scantleberry who sadly passed a few months ago.

The Treasurer reported:

- Income had reduced slightly but other regular users were starting.
- £8000 was lent to St James' Church to cover the delay in re-claiming VAT which explains the reduction in interest.
- The 5 year electrical check and a payment for the upgrade to the village web site explains the increase in maintenance charges.
- Increased electricity charges has resulted in the Hall changing its supplier. An unexplained increased cost of the Fire Equipment check will result in changing this provider.
- The Hall requires to be re-wired to meet modern safety standards and this will take place in April at a cost in excess of £1000.
- Although there had been increased costs, the hall had a surplus of £387 compared with £893 last year and he felt that there was no need to increase hire charges in the coming year.

The meeting decided to retain the Piano for the time being and get it properly tuned. It was a facility that could be used if it was properly maintained.

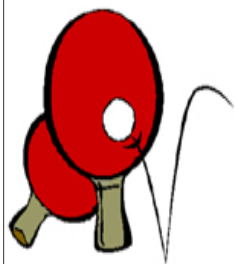


TABLE TENNIS CLUB

Jane Barbrook 263619 janebarbrook@hotmail.com
 Tony Mann 262492 ad.mann@homecall.co.uk

The group continues to flourish, with all four of our tables in use each week. Although this is very positive, it does also mean that we are having to limit new members for the time being.

However, if anyone is interested in joining please contact either Tony or Jane for more information.



NAYLAND SURGERY NEWS

www.northhillsurgery.co.uk

Rachel Beales, Practice Manager 578070

Please be aware that the Easter Bank Holiday weekend is fast approaching. If you are going to run out of your regular medication during the 4 day break please ensure that you request your repeat medication by Tuesday 27th March so that your prescription is processed before Good Friday.

The Surgery will be closed over the Easter Bank Holiday weekend but if you require medical advice during this time please speak to your local pharmacist or NHS 111 who will be able to assist you.

As many of you may be aware Dr Hickling has resigned from the practice and will be leaving at the end of March. Dr Hickling has been with the practice a number of years both as a Partner and a Salaried GP. He will be taking a step back from General Practice initially but will continue his work with NHS England. He will be missed by staff and patients alike and we wish him well in his future ventures.

As a result of this we are currently advertising for additional clinical staff and we will update you in future newsletters of the successful appointments.



NAYLAND WITH WISSINGTON CONSERVATION SOCIETY

Chairman: Mike Hunter 264100
mikejphunter@gmail.com

www.naylandconservation.org.uk

The Court Knoll Exhibition held at Nayland Village Hall on the 3rd of February was a great success with over 130 members, guests and visitors in attendance. After having an opportunity to inspect the finds revealed by the excavations in the autumn of 2016, leading archaeologist Jo Caruth of Suffolk Archaeology gave an illuminating talk on the progress of the project and identified what remains to be done.

Despite an appallingly wet evening, attendance was also excellent at the Society's AGM on the 12th of March. Following the usual business of approving accounts and re-appointing the chair and committee the audience were shown the plaque commemorating the efforts of Richard Wiles who, as reported in the last edition of the Community Times, has undertaken so much voluntary work in Horkesley Lock and Richard's Wood. Sadly Richard was unable to attend the meeting to receive his well-deserved recognition.

After the formal part of the evening was over, Mark Bills, the director of Gainsborough House in Sudbury, gave a superb lecture on Gainsborough followed by an explanation of the proposed development at Gainsborough House.

Planning matters continue to occupy the committee and those of you that regularly walk the bridle path which abuts the southern boundary of Stoke by Nayland Golf Club will have seen the decimation of what had once been a delightful route from Beachams Farm to Gravel Hill. In the absence of an adequate forum for the public to express their disapproval at the consequence of BDC's planning committee decision to permit development at Beacham's Farm, the Society organized a public meeting at Nayland Church Hall on the 14th March. It remains to be seen whether the works to the bridle path are removed following the construction of the new dwelling.

Forthcoming events include the Village Litter Pick on the 14th April and a private visit to Belchamp Hall, a Queen Anne mansion located to the west of Sudbury on the 16th of May. As numbers are limited please email me if you wish to reserve a place. Our bank holiday footpath walk will take place on the 7th of May and we shall be meeting at the Fire Station at 2.00 pm.

On the occasion of the 242nd anniversary of the birth of John Constable, Chris Hunt will be leading an additional walk on the 2nd of June entitled the "John Constable Birthday Walk" starting at Stoke at 2.00 pm and finishing at St. James' Church in Nayland.

Open Gardens will take place on the 10th June and as usual we are hoping that many of you will be willing to open your gardens to share with the visiting public or support the event by helping with teas, car parking and many other tasks. If you would like to help then please contact the Society secretary Jill Slater on 01206 262145.



NAYLAND FIRST RESPONSE TEAM

Coordinator: Tracy Le Grys 271553 Mob 07504 118843 tracyb295@gmail.com

We need your help

Nayland First Responders are a team of volunteers who attend medical emergencies in the local area. We are looking for more volunteers so that we can provide as much cover as possible. The group have monthly training sessions at Stratford St Mary and duties are flexible to fit in with other commitments.

Are you interested in joining us or do you know anyone who may be?

If so please contact Tracy Le Grys or view:
<http://www.eastamb.nhs.uk/join-the-team/community-first-responders>



HORTICULTURAL SOCIETY

Chair: Trevor Smy 262022 trevor.smy@virgin.net www.naylandhortsoc.org.uk

After a long, cold winter, we are at last we are seeing signs of Spring in our gardens. As I look out of my window, there are definite signs of activity - daffodils and tulips are showing their faces and buds are appearing on some of the trees and shrubs. Our Committee too have been active, and by the time the Community Times is distributed, we will already have had our Spring Show and a talk on "Wildlife Gardens and Conservation" by Ian Seager.

Please come along to our **AGM** on the 17th April, 7.30 in the Church Hall. Our AGM will be followed by a horticultural themed Quiz. Members and prospective members are very welcome.

Our **Morning Market** is being held on the **19th May** in the Church Hall, 9.30 -12 noon. There will be plants, produce and cakes available as well as refreshments. Any donations of items for sale or for raffle prizes may be brought to the Church Hall for 8.30am or given to any Committee member beforehand.

The coach outing to **Lullingstone Castle and Gardens**, on the **6th June**, should prove to be an interesting day out. The Castle is set in 120 acres of beautiful Kent countryside. The coach leaves Nayland at 9am and arrives back at 4.30. The coach outing costs £25 and is open to non-members. Early booking is advisable and booking forms are available from the Community Times, on page 22, or can be downloaded from our website.

Here is a list of future events for your diary:

| | |
|----------------|----------------------------------------------------------------------|
| 13th July | Summer Garden Party |
| 4th August | Annual Flower Show |
| 16th September | Coach outing to Hyde Hall |
| 16th October | Autumn Speaker Barry Gayton <i>'Hidden Nurseries of East Anglia'</i> |
| 12th November | <i>'Perils of Bird Migration'</i> |



NAYLAND BELL RINGERS

Chris Hunt, Tower Captain 262 014

RINGING THE CHANGES - OR CELEBRATING A 90TH

There was much bellringing at St James Church over the weekend of January 13/14. Rollie Whiting of

Harpers Estate reached his young 90th birthday. Rollie had much to do with bell ringing during the 70s when the bells were restored and was the tower 'captain' for many years. It's a tradition to honour such efforts with a bit of ringing so a band of ringers, all members of the Suffolk Guild of Bellringers, rang a full peel which, for the technical minded, was 5040 changes of Cambridge Surprise Minor in 2 hours 58 minutes.

The following afternoon a band of local ringers rang a quarter peel of 1260 changes of Grandsire and Plain Bob Minor in 45 minutes. So there, a good compliment to someone who has given years of service to Suffolk bell ringing.

By the way, we could always do with more ringers - interested? Please give me a 'ring' - Chris Hunt 01206 262014



As a footnote - I should point out to those who leave their takeaway remains in the churchyard that a bin is available by the north door!!!





OVER 60s CLUB

Secretary: Barbara Smith 501492

President: Eva Rolfe 263151

Our next Over 60s meetings will be on Thursday 12th April, followed by 10th May and 14th June - do pop these dates in your diaries. We haven't as yet planned any outings but hope to do so.

More members would be very welcome to come along and enjoy refreshments with us and have a chat and a game of bingo; we meet on the second Thursday of each month in Parkers Way Community Centre at 2.30pm.

Diana Whiting



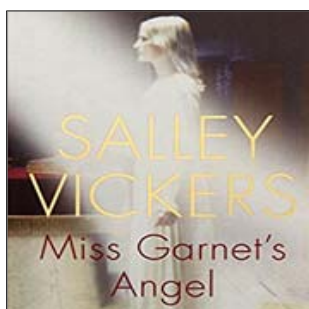
NAYLAND LUNCHEON CLUB FOR OVER 60S

A Monthly Lunch for Senior Citizens ~ at Longwood Barn ~ 12 noon for 12.30pm ~ £3
Olga Alexander on 263923

The venue of the monthly lunches are now held at Longwood Barn, Fen Street. The lunches will be held on Tuesdays and the dates of the next lunches are 27 March, 24 April, 22 May and 19 June.

Make a note of the dates in your diary and come along and join the friendly atmosphere for a chat with friends, old and new.

If you would like to join us for lunch just phone to let me know. If transport down to Fen Street is difficult telephone Olga Alexander on 263923 to see if we can collect you.



BOOK CLUB

Jane Barbrook 263619 janebarbrook@hotmail.com

Our last book club title was 'The Miniaturist', Jessie Burton's debut novel, which is set in 17th Century Amsterdam.

Our current book is 'Miss Garnet's Angel' by Sally Vickers.



NAYLAND ART GROUP

Liz Thorne 262664

At our last meeting Liz advised us that due to changes in his personal circumstances our longstanding tutor, Keith Whitlock, will be unable to carry on tutoring us all in the future. We were all very sad to hear this news but must accept his decision and therefore move on to source a replacement. Several names have been suggested and these are being checked out to find a suitable candidate.

We are looking at a return visit to Munnings Gallery at Dedham. As part of the River Stour Festival, which runs from March through to September 2018 covering a variety of events along the Stour Valley, the Munnings Gallery are putting on an exhibition called Munnings and the River which should be of interest to all.

Colin Ramsell

VILLAGE HALL GARDEN WORKING PARTY

Saturday 14 April
from 9am



Please come along and join us and make it a social occasion.

IT WILL BE USEFUL TO BRING TOOLS, GLOVES, SECATEURS, WHEELBARROWS, ETC.

ST JAMES' CHURCH SPRING CLEAN



Thank you to the brave volunteers who came along to help give St James' Church a good dust 'n' polish in time for Easter.

Due to the blizzard weather conditions the turn out was lower than hoped but some important jobs were achieved.

Once the Lavatory, Served and Storage project is completed we will need a big clean so watch this space for news.

Once again, many thanks for your support.

Chris Hunt: 262014



HANDBELL RINGING

It is hoped to reform handbell ringing team in Nayland.

No experience necessary.

Practices will be held in the Church Hall from 2pm-3.30 on Tuesday afternoons commencing 8th May.

Someone has come forward to set up and direct the group temporarily but ultimately a permanent director will be needed.

If you are interested in tune ringing on handbells or in conducting a group, please contact Chris Hunt on 01206 262014



Woodland Corner

Administrator: Nicola Peachey 263054
e-mail: woodlandcorner@outlook.com

Manager: Cheryl Leeks 263054
<http://woodlandcornernayland.blogspot.com>

Registered Charity
No. 1035330

behind Nayland Primary School, Bear Street,
Nayland, Colchester, CO6 4HY

We have kicked off this term with two fantastic fundraisers. Thank you to everyone who came out after the snow to our Bingo event, we raised an amazing £640. The Mother's Day Cake sale was very popular, thank you Kerridge's for letting us set up outside your shop, we sold £275 worth of cakes. Thank you everyone for your continued support. We will be buying Hi-Vis Jackets for the children to wear on outings around the village – look out for the purple vests!

This term we are learning about Spring. We will be planting our vegetable plot and sowing seeds in pots to take home. The children made beautiful Mother's Day cards and hand print rhymes. We will be getting ready for Easter, by making cards, chocolate nests and joining the Cygnet class for their Egg Hunt. One of the parents brought in two lambs from her farm. We were able to bottle feed Emily and Max.

We are pleased to welcome seven new children and their families after Easter. We have limited sessions available for the summer term, please contact us to arrange a visit and register your interest.

Now the evenings are drawing out we have been enjoying playing outside for longer and our Early Years Football has restarted.

We are now taking bookings for our Easter holiday club, please see our advert on page 14.

We are busy planning the "Pop Up Circus" in conjunction with Nayland Primary School HSA on Saturday 16th June the at the Village Hall. Look out for posters with further information.





NAYLAND BABY & TODDLER GROUP

Leaders: Karen Tranter on 07970 968882
Charlotte Durance on xxxxxxxxxxxx



Nayland Baby and Toddler Group have had a busy spring term.

Toddlers have been trying out our new dressing up costumes and many of the babies are starting to use the walkers and have a good look around! The children have been getting messy with foam and searching for toy animals in our sand tray.

Pop in and join us. Healthy snacks are available. It's a great chance to have a cuppa and slice of cake and meet local parent and carers.

The group Facebook page (*Nayland Baby & Toddler Group*) has many photos of the activities.

We're open on Fridays during term time from 9.30-11.30am in Nayland Village Hall.

First visit to the group is free and then £4 per visit. Contact Karen or Charlotte - details above.



MESSY CHURCH

Churches of Nayland, Wiston, Leavenheath, Polstead, Stoke by Nayland
For children and parents: Activities, crafts, worship followed by afternoon tea.
For further information: Revd Valri Armstrong 262814

All members of the family welcome for fun art and craft activities and games based around informal worship and afternoon tea.

Don't forget that on Sunday **25th March**, Messy Church goes on tour! We will be at St James' Church, Nayland, 4-6pm with the usual array of messy activities along the theme of the Procession through Holy Week.

Then on Sunday **29th April** we will be back in St Mary's Church, Stoke by Nayland, 4-6pm with the theme of St Mark.

On **27th May** Messy Church will be held in the Village Hall at Stoke by Nayland.

Please put the dates in your diary and come and join us for more messy fun. All ages welcome, no pre-registration required.

EASTER JOKES

How do you stay healthy over Easter?

Do some eggercise!

Why shouldn't you tell an Easter egg a joke?

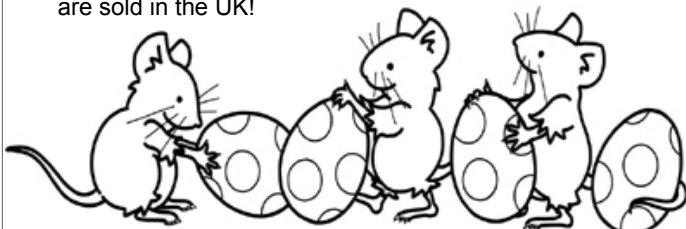
Because it might crack up!

Why did the Easter egg hide?

Because it was a little chicken!

EASTER FACTS

- The first Easter eggs were made in France and Germany in the early 1800s. Britain's first egg was produced by J S Fry and Sons in 1873. The most popular Easter egg worldwide is Cadbury's Creme Egg – the first one was made in 1971. Each year about 80 million Easter eggs are sold in the UK!

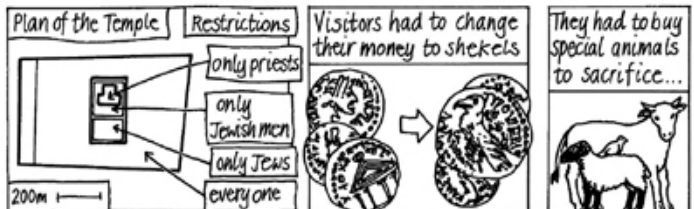


Bible Bite

A short story from the Bible

It can be read in the Bible in
Mt 21:12-16, Mk 11:15-18, Lk 19:45-48

When Jesus reached Jerusalem he went to the Temple, built as a place where everyone could worship God, but with restrictions...





VILLAGE HALL MANAGEMENT COMMITTEE

Registered Charity No 304 928

Chairman: Iain Wright 263646

Secretary: Christine Thompson 262825



FEBRUARY COMMITTEE MEETING

MATTERS ARISING & HOUSEKEEPING BOOK

- Comments and housekeeping books were checked. There were no new comments.
- The calendar was read out. Locks have been contacted about the PAT inspection of the small appliances.
- The fire extinguishers have been checked by Firepower and a Certificate issued
- The annual maintenance check will be carried out.
- Tim Allen will be asked for advice on front doors to the Hall.
- A new element has been fixed to the infra red heaters in the dressing room.
- Quotes will be obtained for new windows in the dressing room and for secondary glazing
- The floor tiles are lifting in two places in the entrance foyer. Edward Hyde quoted for this and for replacing the tiles in the Ladies toilet but this was too expensive. Alternative quotations will be sought.
- The door frame to ladies toilets is rotting. A quote for this will be obtained.
- The curtain tracks and hooks need replacing on the side curtains in the main hall. Stuart Mosely will be asked to quote. This will be left until after the hall decoration is finished.
- A sign at the drive entrance needs to be fixed to the neighbour's fence
- It was agreed to accept Gary Napper's quote for refurbishment of the interior of the hall. He will be asked to work around the bookings & to consult the Bookings Secretary.
- Adam Crisell has been asked to quote for putting up hooks for hanging bunting and flags and to place battens at a suitable height for hanging pictures.
- It was agreed to seek quotes to concrete over part of the former Youth Club garden. This will provide more car parking.

ROOF REPLACEMENT

- Iain Wright is preparing drawings. He has consulted Water Lane architects about increasing the amount of insulation in the roof without needing to remove the ceiling. A solution has been found.
- Iain Wright will discuss the roof replacement at either the April or May PC meeting when he has obtained estimates.
- Tricia Fuller has been informed that Lottery grants are still available for the refurbishment of village halls.
- Tricia Fuller has emailed James Finch to request a contribution towards the roof replacement from the locality budget but has not yet received a reply.
- The VHMC will organise several events to raise funds towards the new roof; in May, July and September.

BOOKINGS

- There have been some problems with the new website which Justin Dowding has sorted out. The company managing our emails has been changed
- Two licences were signed
- 45 stackable chairs with arms will be added to the inventory
- A new line dancing class will be starting on Tuesday mornings

TREASURER'S REPORT

- COIF Endowment £14,638.50, COIF £19,036.49, Bank £11,356.36, Cash £168.88, Assets £13,205.77, Debtors £315.04
- There will be a surplus of £2250.57 for 2017
- Peter Mann was thanked for his work on the accounts which are now being audited by Andrew Gowen
- A letter has been received from the bailiffs about the unpaid debt due to the Hall. As they were unable to gain admittance to the client's property, no further action can be taken

ANNUAL GENERAL MEETING

HALL ACTION PLAN

The Chairman reported that during this year:

- The boiler has been changed. He thanked the Parish Council for their generous contribution to the cost.
- Redecoration is in progress by a local tradesman.
- The damage to the hall floor in the corridor near the changing rooms will be repaired next week.
- The floor in the ladies toilets will be repaired soon as a favourable quote has been obtained.

CHAIRMAN'S REPORT

The Chairman explained the need for the roof to be replaced; the tiles have already exceeded their forty years of guaranteed life; they are beginning to shale and there have been several leaks. He produced plans, showing how the insulation in the roof can be brought up to modern standards. The preferred option would be to replace the marley tiles with slates which have a life of 80/100 years. When this plan has been fully costed, it will be presented to the Parish Council.

The Chairman then thanked all the members of the VHMC for their hard work during the year and welcomed Karen Freeman onto the committee. Karen hopes to restart the village cinema.

TREASURER'S REPORT for the year to 31.12.17

The result for 2017 shows an Income of £23,330 (adjusted for the Charity Commission), and Expenditure of £21,079 (adjusted), giving a surplus of £2,251.

Total bank balances and cash at the end of 2017 stand at £45,200 (inc. £14,638 in the Endowment Fund). Figures for 2016 were £43,265 (inc. £14,604 in the Endowment Fund).

Village Hall bookings income for 2017 was reduced by the loss of the monthly Farmers' Market and also the Nayland Cinema, but otherwise was broadly in line with expectations. The Village Lunches generated good income, and we are very grateful to all concerned for that.

Expenditure was adversely affected by the high maintenance of the old boiler (which was replaced with the help of a very generous grant from the Nayland with Wissington Parish Council), but otherwise was as expected. It should be borne in mind that the Hall is a very important village asset, which does require significant ongoing maintenance.

It is also worth noting that the actual hall building and land are not shown in the accounts, as they are owned by the Nayland with Wissington Parish Council, but leased and managed on their behalf by the VHMC.

ELECTION OF VHMC

The entire VHMC were re-elected.

A.O.B.

- Chris Hunt asked if it would be possible to improve the drainage to avoid occasional flooding in the car park. Iain Wright explained that the drains are cleared every two years but the clay soil causes problems which are not easily solved.
- Trevor Smy asked if the tiles in the passageway will be repaired soon as the table tennis club has difficulties putting away the tables. Iain Wright said the repairs would be carried out next week.
- Bryan Smith asked if an insurance claim had been made for the repair of the flooring as the damage had been caused by water. Iain Wright assured him that it had.
- Mary George asked if an insurance policy could be taken out to protect the Hall from non payers. Iain Wright replied that it would be expensive and the Hall had only one incident in 18 years. A CCJ had been obtained but no money had been forthcoming.

NEXT MEETING

- The next meeting will be **Monday 9th April** at 7.30pm in the Meeting Room.



Daphne Bholua 'Jaqueline Postill'

Garden Notes *by The Old Muckspreader*

At the time of writing there is once again snow on the ground, and though only forecast to last for two days it may have caught out those plants tempted into flower. When it finally departs gardeners may well think of giving their grass a first mow; if so use a high setting. Subsequent efforts can reduce lawns to their required height.

Once Snowdrops have finished flowering the larger clumps can be split up into groups of four or five bulbs and replanted. Here we have a sort of white river growing under some Oaks, and aim to extend the flow.

This month's speciality is the Daphne family which is a large one. The following is a selection of species:

- D. Laureola, the Spurge Laurel is an English native. The leaves are poisonous but not it seems to Muntjac, which demolished a self-sown seedling here. The flowers are greenish, with some scent.
- D. Odora, as its name implies is highly scented. It's usually found in its variegated form.
- D. Mezereum, a rare native is deciduous with white or purple flowers in spring. Here it self-seeds and can be transplanted when young. It isn't very long lived and is liable to die without warning and for no apparent reason.
- D. Cneotum is a prostrate evergreen with long lasting dark pink flowers, useful for front of border.
- D. Tangutica, also evergreen, slow growing with woody stems and small white fragrant flowers. Ours is at least 20 years old.
- D. Bholua is the star of the show, especially its cultivar Jaqueline Postill, probably the best (and most expensive) of all the Daphnes. It is highly scented, free flowering and always stands out wherever it is grown.

There are several other Daphne species. As a family they resent disturbance, incline to be short-lived, but the best are worth the trouble.

Reverting to current jobs the yellow-flowered Winter Jasmine should be pruned now. Even if hard pruned it will then produce much new growth and a better flower display next winter. If not already done the long flowered shoots of Buddleias can be cut back to two buds. The OM/S always leaves a few old shoots unpruned; they will flower earlier, but with smaller flower spikes; good news, though, for the butterflies (if there are any left). Roses can be hard or soft pruned according to your taste, but not Ramblers or Climbers which flower on new wood produced last summer.

Although this article purports to discuss and advise on matters horticultural the OM/S thought he might digress somewhat and move briefly into the products of dead trees - in other words their woods. During the forty odd years that he has lived at M/S Hall he has managed to gather therefrom enough wood from trees that have died or been felled to produce firewood. The best of these is the Oak; it burns slowly and gives out a decent amount of heat. The storm of 1987 produced a good supply, but that has now run out. Next best was Wych Elm; the beetle destroys most trees when they reach a certain age, but there are now some decent sized successors.

Two large Balsam Poplars planted in the early 1980s made rapid growth, came down in recent years and produced much wood which burnt well but didn't produce much heat. Two Horse Chestnuts died from disease; good burning, medium heat. Two large Ashes, growing out of a roadside hedge; excellent for burning. Incidentally Ash can be burnt when green. A large Lime looked like good potential firewood, but we found it produced a sort of choking smell (not unlike burning soap) so it remains a woodpile for the beetles. Holly and Hawthorn both very hard and excellent for the fire. Apple, Pear and Cherry also good. Finally a lot of Cupressus Macrocarpa; this burns well but is no good for an open fire as it spits and sends out burning embers; probably OK in closed stoves.

That's a rough guide to our combustible trees. There are about the same number of species here which we haven't set fire to; they are too precious.

WORDSEARCH: Famous Gardens & Venues ANAGRAMS: Bedding Plants

| | | | | | | | | | | | | | | |
|---|---|---|---|---|---|---|---|---|---|---|---|---|---|---|
| V | U | P | T | R | U | O | C | N | O | T | P | M | A | H |
| S | L | P | L | E | N | H | H | O | L | I | R | I | R | E |
| A | I | Y | O | E | E | T | A | T | T | O | N | O | E | L |
| E | Z | S | C | L | C | A | O | X | B | A | S | T | U | I |
| B | R | E | S | S | I | N | G | H | A | M | O | O | L | G |
| L | V | E | A | I | O | J | S | A | O | C | L | X | R | A |
| E | A | L | N | T | N | E | N | A | D | T | O | U | O | N |
| M | O | O | D | E | S | G | C | I | E | N | C | W | S | A |
| H | O | C | D | C | L | I | H | S | W | I | S | L | E | Y |
| E | X | E | T | E | I | R | A | U | L | E | X | I | M | A |
| I | U | I | S | U | C | U | N | J | R | O | K | V | O | A |
| M | W | E | O | L | E | N | D | E | O | S | E | Z | O | N |
| A | Y | A | G | R | E | A | T | D | I | X | T | E | R | D |

- 1 NOAGEBI
- 2 TUNEIAP
- 3 STAINPIME
- 4 RAINGUME
- 5 HASCUFI
- 6 ABELLIO
- 7 AMERUTAG
- 8 LOGIDARM
- 9 ANIZAGA
- 10 ENVABRE
- 11 SYMSULA

- | | | | |
|-------------|---------------|----------|--------------|
| ANGLESEY | EDEN | HIDCOTE | SISSINGHURST |
| BLENHEIM | GREAT DIXTER | KEW | TATTON |
| BRESSINGHAM | HAMPTON COURT | ROSEMOOR | WISLEY |
| CHELSEA | HELIGAN | | |

Wordsearch words may be horizontal, vertical, or diagonal and forward or backwards
Solutions on page 46

MAJOR GENERAL CECIL B FAIRBANKS, FEN STREET RESIDENT

One of the most important events of the 1960s in Nayland was the formation of the Community Council which led to the acquisition of Webb's Meadow Playing Field and the building of the Village Hall. In June 1966 Major General Fairbanks was elected Chairman of a Steering Committee and became Chairman of the Community Council until 1972 when he became its President until 1981.

A history of the Community Council can be found on its website which includes many pictures of the fairs and events organised by the Council. This picture of Major General Fairbanks shows him with the late John Curtis at the 1968 Fair. John Curtis, together with his wife June, was landlord of the Anchor pub at this time and was a founding member of the Community Council and the Village Hall and Playing Field Management Committee.

Manor General Fairbanks and his wife moved to Fen Street in Nayland in the 1960s, after his retirement. He was born in 1903 in Montreal, Canada, and was educated at Oxford University. In 1924 he was commissioned with the Sherwood Foresters and began a long and distinguished army career. He served in the UK, West Indies, France, Germany and the Middle East, retiring in 1958, finally working for the National Council of Social Service until 1965. He was awarded the CBE in 1946 and the CB in 1950.

During the 1960s when the Fairbanks came to Nayland the lower end of Fen Street was undergoing a transformation. They moved into a newly built house at 43 Fen Street, the last building next to Candy Lane leading to the allotment field, appropriately called Candy Lane House, and lived there until Major General Fairbanks died in March 1982.

No doubt the Fairbanks would have known about the spigot mortar emplacement which had been built during the Second World War for the use of the Home Guard on the land where their house was later built. This structure was probably covered up after the war but is still in place today in front of the house. It was one of three in the village where a primitive sort of gun called a 'Blacker Bombard' was used. The gun was a portable anti-tank weapon fixed on top of a circular concrete base which was surrounded by a trench where the gun crew crouched. The emplacements were built in strategic places from where an approaching enemy could be seen. By the time they had been built and also more up to date weapons were available to the Home Guard, the threat of invasion by the Germans was over and the weapons were never used.

The land on which Candy Lane House and its neighbours were built had been an orchard next to the old almshouses which had formerly been the Nayland Workhouse. According to an Abstract of Title for 31 Fen Street, an indenture dated 1737 was made between Mary Norman, widow and owner of the land, and the Congregational Church that the land would be held in trust by the church after her death, which occurred in 1743, "in recognition of the great regard she had to the Protestant religion and for the better support and maintenance of the Pastor of the congregation of protestant dissenters in Nayland".

In the 19th century the land was leased to William Norfolk until the 1950s. His grandson, also William Norfolk, who died in 2001, told me that the Norfolks' bus company kept their horse drawn carts and carriages in sheds there and later buses. The horses which were used to pull the old fire engine were also kept in the orchard and it was his job to collect them when the Fire Brigade were summoned by the bugle blown by Harry Wilson who



lived in Court Street. The firemen raced from all parts of the village to the White Hart where the fire engine was kept and the horses had to be taken there as quickly as possible to ensure a quick getaway by the crew.

In 1963 the orchard was purchased by William Deaves & Sons, Builders and Undertakers in the High Street for over a hundred years, from the Nayland Charity Trustees and two houses were built on it. At the same time Deaves purchased the almshouses which were demolished and rebuilt as a terrace of three dwellings.

The almshouses were probably originally built in the 16th or 17th century as two semi-detached cottages. After the passing of the 1723 Poor Law Act which imposed a duty on parishes to provide Workhouses, it was recorded in the Nayland Charity Accounts that these two cottages in Fen Street would be converted into a Workhouse, which eventually happened in 1730. With the passing of the 1834 Poor Law Amendment Act the old system of parish relief was abolished and the Fen Street Workhouse closed. The building was then converted into five almshouses by the Charity Trustees.

William Deaves had previously acquired the old factory next door in 1927 which in the early 19th century had been a silk throwsting mill owned by Brown & Moy who also had mills in Colchester and Hadleigh. It was said there were 200 young people from the Nayland area employed there, mainly girls, some of whom lodged in the village and who were listed in the census returns for 1841 and 1851. With the passing of Factory Acts and competition from abroad the silk works closed and later, for a time in the early 20th century, the building became a leather factory associated with the old mill at the top of the street owned by the Bendixon family. However when the factory closed soon after the mill was sold William Deaves purchased

it. After this various different businesses of all kinds used the building until it was finally demolished in the 1960s and the flats and adjoining houses were built. This brought an end to the old industries in Fen Street and, happily for the residents, the tranquillity which they now enjoy soon came about.

Wendy Sparrow, Parish Recorder

[Sources: Dr Slade's History of Nayland, www.home-guard.org.uk, Oxford Companion to Local & Family History; various deeds and documents kindly loaned by Mandy Cook and Peter Drew]



NAYLAND WITH WISSINGTON PARISH COUNCIL

Coming Soon

Local Housing Needs Survey 2018

Nayland with Wissington Parish Council has been working with Stoke by Nayland Parish Council, the Lady Anne Windsor Charitable Trust and Babergh District Council to set up a full survey in our parishes. Each Parish Council has now received a grant from the Community Housing Fund to cover the cost of data analysis and hope to carry out the survey at the end of May/early June.

Every household will be asked to complete a confidential questionnaire with information about the future needs of themselves and their families. Young people may want to remain in or return to the parish but need access to affordable housing. Older residents may need to downsize to smaller accommodation more suitable to their long term needs. When the survey takes place, we will encourage everyone to complete the questionnaires so that any future development can be influenced by the wishes of those who live in our community.

Full details will be available at the Annual Parish Assembly on 23rd April 2018

pc@naylandwithwissington.suffolk.gov.uk

BRIDLEWAY PROTEST WALK

Braving the worst of the Beast of the East weather conditions on 27th February walkers and riders, with their dogs and horses took to the bridleway to walk from Cock Street Leavenheath to Gravel Hill, Stoke by Nayland.

Furious local users say they will be forced onto dangerous alternative routes due to the proposed closure of the well-used bridleway, which has been devastated to provide access for construction vehicles to the Beachams Farm development. See pages 40 & 41 for more detail.

Further news will be posted on the Facebook page: **Save Our Ancient Bridleway in Nayland / Leavenheath** and nextdoor.co.uk - **Nayland with Wissington**.

Another useful local Facebook page is: **Stoke By Nayland Boxford Leavenheath Nayland Polstead Bures Assington Honey** for news, promotion, road conditions, and more.



SING FOR FUN IN STOKE!

Informal group singing sessions held weekly on Monday mornings. No pressure, just the opportunity to sing – and to meet others who want to do the same.

- No experience needed (yes really!)
- For men and women
- Songs to suit all tastes – from Bach to Beatles and beyond!
- No need to read music
- Led by experienced local musician Emma Bishton, who is used to working with people of all ages and abilities.

Mondays 10am – 11.30
 April 23rd to June 25th (except bank holidays)
 Stoke by Nayland Village Hall
 £35 for 8 weeks, or £5 each session .

To book a place: contact Emma on 07775 945021 or email singinstoke@gmail.com



Summary of the
ST MARY'S, WISTON
ANNUAL PAROCHIAL CHURCH MEETING
 held at Newtons Farm on Tuesday 13th March 2018

At the Vestry Meeting Nicola Thorogood and John Branfield were re-elected as Churchwardens for the coming year. The PCC Meeting which followed re-elected the current members of the PCC, including Ned Cartwright and Caroline Nevill who joined the PCC in January.

Reports on all aspects of the work of the PCC were received. Particular thanks were expressed to Gerald Knox who stands down as Treasurer after 54 years. He is replaced by John Branfield. John and Rosemary Knox continue as Deanery Synod representatives and Tibby Mimpriss as Secretary. George Storey gave a detailed and informative history and appreciation of the trees in the churchyard together with guidance for their future maintenance.

The PCC expressed their gratitude to the Friends of Wiston Church who had again funded much needed repairs.

The organist at St Mary's was congratulated on her extra work helping the congregation learn new hymns and thanked for her dedication to the musical life of the church.

Tibby Mimpriss

JOHN CONSTABLE BIRTHDAY WALK



Meet at Recreation Ground, Stoke by Nayland

Saturday 2nd June

at 2.30pm

(with hopes weather is better than 1953!)

John Constable was born on 11th June 1776. He painted Stoke by Nayland Church and the altarpiece at Nayland. To find out more about these pictures, the artist, his association with the area and methods of working, join this walk, led by Chris Hunt, from Stoke by Nayland to Nayland to celebrate his birth.

Walk to St James' Nayland

Children and dogs welcome (dogs must be on lead)

There's a bus back to Stoke if needed to collect cars!

FREE - Donations to church welcome

Further details telephone 01206 262014



Spaces now available for September
Register your interest today

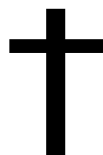
Woodland Corner are now allocating pre-school places for the next school year. If you have a child turning 2+ in the next year, please contact us to arrange a viewing and complete a registration form.

In the grounds of Nayland Primary School, Bear Street, Nayland CO6 4HY
 Tel: 01206 263054 Email: woodlandcorner@outlook.com
 web: <http://woodlandcornernayland.blogspot.com>
 Woodland Corner is a Registered Charity 1168815

WELCOME TO NAYLAND

in the heart of Constable Country

**DOG POO:
 PLEASE BIN IT!**

**FIVE PARISHES CHURCH SERVICES: APRIL & MAY**

Nayland, Wiston, Leavenheath, Stoke by Nayland & Polstead

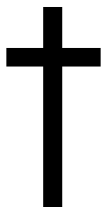
| <i>Date</i> | <i>Time</i> | <i>Venue</i> | <i>Service</i> | <i>Priest / Leader</i> | <i>Time</i> | <i>Venue</i> | <i>Service</i> | <i>Priest / Leader</i> |
|-----------------------------------------------------|-------------------|--------------------|-------------------------------------------|------------------------|----------------------|--------------|----------------|------------------------|
| 25 th March <i>Palm Sunday</i> | 8.00am | Wiston | HC 2 | Revd Mark Woodrow | 4.00pm | Nayland | Messy Ch. | Revd Valri Armstrong |
| | 10.00am | Nayland | HC 1 Palm Sun | Revd Valri Armstrong | 6.30pm | Wiston | Evensong | Revd Mark Woodrow |
| 29 th March <i>Maudy Thurs.</i> | 11.00am | Cathedral BSE | Chrism Eucharist | - | | | | |
| | 7.00pm | Polstead | HC 1 & Foot Washing | | Revd Valri Armstrong | | | |
| 30 th March <i>Good Friday</i> | 12-3pm | Leavenheath | Meditation at Foot of the Cross | | Revd Mark Woodrow | | | |
| 31 st March <i>Easter Eve</i> | 7.00pm | Wiston | Easter Vigil & 1st Eucharist of Easter | | Revd Mark Woodrow | | | |
| 1 st April <i>Easter Sunday</i> | 8.00am | Nayland | HC 2 | | Revd John Fowler | | | |
| | 10.00am | Stoke | Benefice: Easter Celebration | | Revd Mark Woodrow | | | |
| 8 th April <i>Easter 2</i> | 8.00am | Polstead | HC 2 | tbc | 10.00am | Wiston | MP | Derek Johns |
| | 10.00am | Leavenheath | MP | David Rowe | 6.30pm | Nayland | Evensong | D Pryor/K Hunt |
| | 10.00am | Stoke | HC 1 | Revd John Fowler | | | | |
| 15 th April <i>Easter 3</i> | 8.00am | Stoke | HC 2 | Revd John Fowler | 10.00am | Polstead | FS | Revd Valri Armstrong |
| | 10.00am | Nayland | MP | D Pryor/K Hunt | 6.30pm | Leavenheath | Ev Praise | Revd Valri Armstrong |
| | 10.00am | Wiston | HC 1 | Revd John Fowler | | | | |
| 22 nd April <i>Easter 4</i> | 8.00am | Wiston | HC 2 | Revd Mark Woodrow | 10.00am | Polstead | MP | B Wigglesworth/JM |
| | 10.00am | Stoke | MP | David Rowe | 10.00am | Leavenheath | HC 1 | Revd Valri Armstrong |
| | 10.00am | Nayland | HC 1 | Revd Mark Woodrow | 6.30pm | Wiston | Evensong | Revd Mark Woodrow |
| 29 th April <i>Easter 5</i> | 8.00am 10.30am | Stoke Bildeston | HC 2 Deanery 5th | Revd John Fowler | 4.00pm | Stoke Church | Messy Ch. | Revd Valri Armstrong |
| 6 th May <i>Rogation Sunday</i> | 8.00am | Nayland | HC 2 | Revd Mark Woodrow | 3.00pm | Wiston | Rogation | |
| | 10.00am | Leavenh. VH | First Sunday | Revd Valri Armstrong | 6.30pm | Stoke | Evensong | Jane Addis |
| | 10.00am | Polstead | HC 1 | Revd Mark Woodrow | | | | |
| 10 th May <i>Ascension Day</i> | 7.00pm | Nayland | HC 1 | Revd Mark Woodrow | | | | |
| 13 th May <i>Easter 7</i> | 8.00am | Polstead | HC 2 | Revd Mark Woodrow | 10.00am | Wiston | MP | Derek Johns |
| | 10.00am | Leavenheath | MP | David Rowe | 6.30pm | Nayland | Evensong | Revd Mark Woodrow |
| | 10.00am | Stoke | HC 1 | Revd Valri Armstrong | | | | |
| 20 th May <i>Pentecost Sunday</i> | 8.00am | Stoke | HC 2 | Revd Mark Woodrow | 6.30pm | Leavenheath | Ev Praise | Revd Valri Armstrong |
| | 10.00am | Polstead | FS & Farewell Val | Family Service Team | | | | |
| 27 th May <i>Trinity Sunday</i> | 8.00am | Wiston | HC 2 | Revd Mark Woodrow | 10.00am | Leavenheath | HC 1 | Revd Mark Woodrow |
| | 10.00am | Stoke | MP | David Rowe | 4.00pm | Stoke VH | Messy Ch. | Messy Church Team |
| | 10.00am | Polstead | MP | B Wigglesworth/JM | 5.00pm | Stoke | Evensong | With Bishop Martin |

Key: FC : Family Communion, HC 1 : Holy Communion Contemporary , HC 1 : Holy Communion, HC 1tr: Holy Communion Traditional, FS : Family Service, PC : Parish Communion, MP : Morning Prayer, MW : Morning Worship, MS : Morning Service, EP : Evening Prayer, B : Baptism, Ev Praise : Evening Praise, Café Ch: Café Church,

Note: *Worship leaders may be subject to change*

Other Dates for your Diary

- Sunday 6th May** **Rogation Sunday:** The annual Rogation trailer ride [or follow in cars] will take place at 3pm starting from St Mary's Wiston.
We will 'beat the bounds' around Nayland and Wiston to Shaddelows Farm blessing the crops en route returning to tea and refreshments in the usual tradition.
All are very welcome. Why not come along and bring the children on this trip?
- Monday 28 May** **Nayland Church Fete, Webb's Meadow 2-4pm** [See page 23]



Dear Friends,

JESUS CHRIST IS RISEN TODAY, ALLELUIA!

Easter is Easter eggs time, right? Well yes but there is a fantastic blockbuster of a story going on at this time too. Let me set the scene:

On a bright sunny day Sunday before Easter Jesus rides into Jerusalem in triumph not in an armoured stretch limousine or a nice golden carriage like the Queen but on a smelly donkey.

Now Jerusalem was in the hands of a foreign power, those dastardly Romans. The people cheer him to the rafters but before long he is arrested and handed over to the Romans. Cue boos and hisses for Pontius Pilate the Governor. Pilate tries to find a way to save Jesus, but the rabble are having none of it "Crucify him, crucify him" they scream. No appeal, no community service, the sentence is death, and so off Jesus goes up the Via Romanae Urbis (*later changed to the Via Dolarosa so as not confuse it with the Northern Approach Road in Colchester*).

Beaten and humiliated Jesus is forced to drag a heavy rough-cut cross behind him. Splinters everywhere, Skin rubbed off as the wood tears against him! Not surprisingly he drops it. I saw the film 'Ben-Hur' recently and Judah Ben-Hur gives Jesus a drink of water and helps him up with the cross (A real tear-jerking moment particularly as Jesus had cured Mrs and Miss Ben-Hur of their leprosy). Fortified by kindness Jesus reaches the top of the hill and joins two other true criminals. Those nasty Romans hammered nails through their hands and feet (ouch) and hauled them up to hang in the sun until dead. No wonder Jesus cried out to his Father and yet when he does it isn't to condemn them but to ask for forgiveness.

Many hours later, he cried out and died, and the heavens and earth reacted in the only way that they could at the death of their creator - cue for lightning, thunder and earthquakes sufficient to make everyone say, "This was truly the son of God" and I hope those Romans who stole his clothing feel thoroughly ashamed of themselves.

And now the mood changes again, as Jesus is gently taken down. Poor Mary his mother crying her eyes out as Jesus is taken to a tomb, cleaned up and laid to rest for eternity. But no! – two days later, on what today we call Easter Sunday, Mary gets up early to visit the grave, who knows, carrying a nice bunch of flowers, and in her grief, finds a real Burke and Hare moment -the body of Jesus is gone! Poor Mary is heartbroken but cue for Triumphant music as, clothed in "Daz white robes", golden light radiating from above and arms out wide, there Jesus is RISEN FROM THE DEAD!

If it had happened today the BBC would have been there filming for Songs of Praise as a choir of a thousand appear from all sides dressed all in white singing "Jesus Christ is risen today, Alleluia!"

But is that it, is that the end of this blockbuster story? Well No, Jesus hangs out with his closest friends for a little while longer, teaching them, encouraging them before ascending into Heaven once again, who knows in a Technicolor™ mystical haze to the first century equivalent a soundtrack by John Williams... but that is still a little way off for now.

But back to the present time, why not see and hear for yourself the Glorious Easter Story, and join us for our Easter Celebration on **Easter Sunday 1st April at 10am in St Mary's Church Stoke by Nayland**, followed by an Easter Egg Hunt and refreshments for all - You won't regret it and you will certainly enjoy it.

Jim Bond, Lay Elder, St Matthew's Church, Leavenheath

Church News

WEEKDAY PRAYER

Morning Prayer is held on Tuesdays at 8.30am at St Matthew's Leavenheath. All are welcome.

MESSY CHURCH

Messy Chuch is held on Sundays (*usually the last Sunday*) at 4pm-6pm. Next dates are 25th March at St James' Nayland, 29th April at St Mary's Church, Stoke by Nayland and 27th May at the Village Hall at Stoke by Nayland. See page 32 for details.



DID YOU KNOW?

It's better to die in a refugee camp than to die in a war; to risk your children's lives in a plastic dinghy and to leave everything you know behind. When the alternative is terror, bombs and bullets, almost anything is better.

This is the terrible choice facing tens of millions of people worldwide - fleeing conflict and disaster, making dangerous journeys in search of safety. **Christian Aid** was set up over 60 years ago to support our work with refugees in Europe following the Second World War. Let's act again now, to help relieve suffering and build a world where everyone has a safe place to call home.

If you have a free evening during **13-19th May** perhaps you would consider delivering Christian Aid envelopes in and around Nayland and Wiston.

Contact local organiser: Nicola Thorogood on 262453. Last year we collected £663.02, let's see if we can top that figure this year! Every penny counts when you are fleeing for your life!



FLOWERS IN ST JAMES' CHURCH

Easter Flowers: Jo Murrison (*11 Fen Street*) or Jeannette Finch (*Rose Cottage, 5 Fen Street*) for Nayland and Fiona Storey for Wiston, are happy to receive contributions towards the cost of Easter flowers and lilies.
Jo Murrison 262369

**CHURCH CONTACT
DETAILS ON PAGE 47**

Priest in Charge:
Revd Mark Woodrow
The Vicarage
Bear Street, Nayland CO6 4LA
01206 262150
revdmarkwoodrow@gmail.com
W: naylandchurches.wordpress.com/
F: [facebook.com/naylandchurches/](https://www.facebook.com/naylandchurches/)
T: @NaylandChurches

FROM THE REGISTERS



BAPTISMS

Ruby & Lilly Eves
(Nayland)

**WISTON CHURCH
PORCH BOOKS**

Do call into the church porch and browse through the selection of second-hand books - autobiographies, cookery, children's, fiction, and non-fiction.

Feedback from James Finch - Your Stour Valley County Councillor

SADLY, COUNCIL TAX HAS TO RISE

On 8th February I attended Suffolk County Council's Council meeting which voted to increase council tax in Suffolk for the first time since 2010. A 2.99% increase was approved, along with a 2% adult social care precept, meaning taxpayers will be paying an increase of a little under 5% more for county council services than last year. A council tax rise was not surprising – we had mentioned it last year, with a 1.99% increase put forward, with the adult social care precept at 3%. Despite the small change in the way the tax is being divided, the increase remains the same.

We spend about half a billion pounds providing services every year in addition to the circa £600k which is direct government funding (ring fenced) for our schools. Like the majority of councils in England, we accepted a four-year financial package from the Government, covering the period from 2016/17 to 2019/20. It also, helpfully, provides some certainty about our funding. However, we can't rely on this alone. We were successful in our bid to be one of 10 areas where we can retain 100% of business rates generated here in Suffolk, which will help. But there still remains a budget gap.

In 2018/19, the gap is £26.8million. That is the difference between the amount of money it will cost to provide essential council services in Suffolk and the amount of money we actually have to spend. We are required by law to have a balanced budget so we have therefore had to find ways of closing that budget gap.

LEAVENHEATH BRIDLEWAY 24, STOKE BY NAYLAND BRIDLEWAY 32 (BEACHAMS FARM)

Following on from the information provided in my document dated 21 February, some further queries and concerns have been raised by parties interested in this matter. Again, in the interests of expediency, I have produced this update which will provide the Suffolk County Council (SCC) position. It will be circulated to all those that have expressed an interest.

The extent and practicality of the proposed temporary closure of the bridleway during construction works has been queried. As a result of these queries, I have discussed the matter again with SCC legal advisors and the owner of Beachams Farm and as a result, the management of the closure under the Temporary Traffic Regulation Order (TTRO) has been reviewed.

1. As the safety of the public using the route remains the primary concern, it is still considered that there will be a need for a TTRO during the construction phase of Beachams Farm. The decision to restrict public access along the bridleway, during times when the construction site is active, was made taking into account the potential for conflict between heavy vehicles meeting non-motorised users and the risk, or liability, to SCC in the event of an accident. This decision may have been over cautious, so to facilitate as much public use as possible but still to minimise the potential liability on SCC, a revised management of the closure will be put in place.

2. The proposed TTRO closure is due to come into effect on the 9th April, for an initial period of 6 months. However, within that overarching closure, the bridleway will remain open for public use except for short periods of concentrated activity when the route will need to be closed. Examples of this activity being when UK Power Networks carry out works to the electrical supply network along the Bridleway over a period of 4-5 days. The pouring of concrete for foundations etc may be another period of several days when a number of large vehicles need to access the site several times per day.

3. Suitable signage stating when the Bridleway will be closed will be erected giving prior notice of the closure. They will be removed once that aspect of the work is complete.

4. Outside of these concentrated periods of work, the Bridleway will be open for public use at all times but may be subject to more occasional contractor's vehicles during the day (and

PROPOSAL TO CHANGE HOME TO SCHOOL TRAVEL

On Wednesday 28 February 2018 the consultation to help find a long-term solution to providing affordable home to school transport closed. In Suffolk, £21 million of taxpayers' money is spent every year getting children to and from school. Suffolk County Council has already introduced a number of efficiency changes to the service saving around £2.6 million. Now, like many other councils across the country, the authority needs to consider making more significant changes across a number of areas, including home to school travel.

The council's current school and post-16 travel policies go above legal requirements, the consultation seeks views on changing these policies, giving the opportunity to explore local solutions as well as three alternative options for children aged 5-16 and 16 plus.

Over 3500 people have already responded to the school and post-16 travel consultation surveys, over 151 people attended one of the consultation workshops and 36 people attended the 'Have your say' event where alternative solutions were presented.

All of the feedback gathered will be carefully and thoroughly considered by Suffolk County Council's Cabinet in June 2018. www.suffolk.gov.uk/schooltravel.

James Finch, Suffolk County Councillor, Stour Valley Division

Assington, Boxford, Bures St Mary, Edwardstone, Groton, Leavenheath, Lindsey, Little Cornard, Milden, Nayland with Wissington, Newton, and Stoke by Nayland

T: 01206 263649 M: 07545 423796

E: james.finch@suffolk.gov.uk

particularly at the start and finish of the working day). Signage will be in place at the ends of the Bridleway, and other connecting routes, advising of the possibility of vehicular traffic and the need to exercise caution.

5. A maximum speed limit of 15 mph will be placed on contractor's vehicles using the bridleway, drivers will also be briefed on the need to proceed with extreme care when transiting along the Bridleway and in addition, the local road network in the vicinity.

6. With these revised management measures in place, it should allow a workable solution to be implemented that will allow as much public access as is reasonably possible. However, the public will have a part to play in making this possible by also acting reasonably if, and when, they meet a vehicle on the bridleway. An oncoming vehicle will stop but with horses and walkers being much more mobile, both parties will need to cooperate in a pragmatic manner, as it is not practical (or desirable, due to the potential damage to the surface and banks) to expect a large vehicle to then reverse back up the bridleway.

7. The issue of planning consent for the works to the surface of the Bridleway has been questioned. Whilst it is accepted that the intended improvements to the surface were not included in the original planning application to Babergh District Council (BDC) and therefore, not commented on by SCC, no enforcement action by SCC is intended, now that the works have been completed. The reasons for this are: -

- i. The works that have been undertaken have provided a surface that is both safe and suitable for public use.
- ii. They have not incurred an additional cost to the public purse and will not do so in the future.
- iii. The condition of the surface would have deteriorated when used by heavy vehicles exercising a private right of access to Beachams Farm. Had the works not been carried out, the deterioration would have been to the detriment of public users.

8. The inconvenience to users of the bridleway during the construction works is regretted, however, it is considered that the more pragmatic and practical measures of managing both public and private access set out above addresses the questions and queries that have been raised to date.

Glyn French, West Area Rights of Way Manager for Suffolk County Council, 5 March 2018

PUBLIC OUTRAGE: SAVE OUR ANCIENT BRIDLEWAY



From this



To this

Over 80 concerned residents of Nayland, Wiston, Stoke by Nayland and Leavenheath expressed their outrage at the works carried out to a section of a popular ancient bridleway in the heart of the Dedham Vale Area of Natural Beauty at a public meeting in Nayland Church Hall on Wednesday evening. This situation has occurred on the bridleway between Beachams Farm and Gravel Hill, Stoke by Nayland arising from the grant of planning permission by Babergh District Council Planning Committee for the erection of a new house at Beachams Farm and other works on the site.

The meeting, arranged by Nayland with Wissington Conservation Society, was attended by Suffolk County Councillor James Finch, Glyn French the SCC Rights of Way Manager, John Ward the Leader of Babergh District Council and Gemma Pannell a Babergh Planning Officer.

Local resident Christopher Whybrow QC presented the current situation and the main areas of concern. He indicated that a number of options were available including an application to the courts for judicial review and a reference to the Local Government Ombudsman for maladministration.

According to Glyn French, permission from SCC was not sought before works commenced to the bridleway. He accepted that there might be grounds to bring a prosecution under the Highways Act 1980 but was of the opinion that little would be achieved by doing so. He explained that SCC has a statutory duty to ensure that walkers, riders and cyclist are safe to use the bridleway. SCC have amended their intention to make an order for temporary closure of the bridleway for a continuous period of six months and are looking at arrangements whereby the public will have access at the weekends and bank holidays and at other times of the day. Damage by construction vehicles accessing the bridleway via Nayland and Gravel Hill has not been addressed but consideration is being given to directing traffic to the Gravel Hill entrance to the bridleway from Stoke by Nayland.

Work by UK Power Networks will commence on 9th April. He is hoping to meet with the owner of Beachams Farm and his contractor to discuss the access arrangements and he will take on board the request for a regular user of the bridleway to attend such discussions. He is aware of many points raised in the considerable amount of correspondence received: damage to an old oak tree and banks on Gravel Hill, the narrow nature of Gravel Hill to accommodate lorries and pedestrians. He said there is no proof that any damage was connected to works at Beachams Farm and said vehicle registration numbers and photographs of situations that occur could be sent to him. Following reports of dangerous metal and glass within the hardcore that had been laid along the bridleway he said that he had found only a few small items; this would be monitored. Regarding reinstatement of the bridleway he said he was not clear on what the public were expecting.

John Ward reported that consideration would be given to asking the owner of Beachams Farm to make an application for retrospective planning permission for the works to the bridleway. In such circumstances all interested parties would have an opportunity to make representations in the planning process and it was possible that conditions could be applied to the planning permission detailing the steps necessary to achieve re-instatement of the bridleway.

Open questions and statements followed. It was pointed out that despite signage, lorries had been entering the site via Cock Street. Several witnesses said caterpillar track damage to the banks and an Oak tree on Gravel Hill had been done by a Beachams Farm construction vehicle. A member of the public produced a wide selection of rubbish picked out of the hardcore. A speed limit of 10mph, as recommended by the British Horse Society, was suggested rather than SSC's suggested 15mph. It was felt two days notice of the temporary closures was insufficient. Concern was expressed that this situation could give rise to other developers flouting planning legislation. It was felt reinstatement of the bridleway back to the condition and character as existed in December 2017 should be the eventual aim. Asked which end on the bridleway would provide future access to Beachams Farm, Glyn French said it would be the Gravel Hill end.

Asked why SCC did not know this situation was happening, Glyn French replied that there had been no reference to the works to the bridleway in the planning application. Asked why they did not stop the works when they found out, he said Babergh had granted permission and work had started. Asked if we can have assurance that repairs to all roads and banks will be repaired Glyn French said he cannot give that reassurance.

It was necessary to close the meeting, with many members of the public unable to contribute, due to time constraints.



Some of the pieces of metal picked up from the surface of the hardcore on 1 February 2018

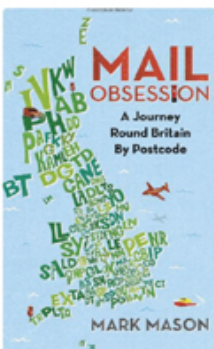
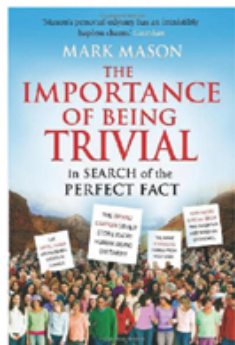


Stoke by Nayland Village Hall
 Thursday 12th April 2018 7.30 pm
AGM AND TALK

'In Pursuit of the Trivial'

by Local Author Mark Mason

Mark writes: Before becoming a writer I did jobs as varied as selling Christmas cards in Harrods, playing guitar in a blues band that toured Europe and making radio programmes for the BBC. Wherever I went, though, I found it was always the trivia that excited me most. The intriguing stuff, the little facts that slip down the back of life's sofa. So I've ended up as the sort of guy who knows that Harrods dropped their apostrophe in 1921 (Sainsbury's still haven't), that Istanbul is the only city in the world to straddle two continents and that The Archers' theme tune was produced by a young George Martin. It's an attitude that keeps life interesting, I find, whatever you're up to at any particular point in time, whether you're living in the West End of London (as I used to), or a village in Suffolk (as I do now).



All past, present and future members welcome to this **free** lecture and complimentary coffee

For further details please contact
 Sue Whiteley - 01787 210945
 E: whiteleysa@hotmail.co.uk

Next event - Summer Day School
 Saturday 21st July 2018
 A talk on the history and a tour of
Theatre Royal, Bury St Edmunds

WEA is a company limited by guarantee registered in England number 2806910 and a registered charity number 1112775

LITTLE HORKESLEY SPRING FAIR

Saturday 21st April 2018 2pm

Little Horkesley Village Hall

Entry 20p

Stalls include: Cakes, Plants, Bric a Brac,
 Raffle, Tombola and Cream Teas



GMR[®] DECORATORS

GMR Decorators Ltd are a leading painting and decorating service based in Sudbury Suffolk.

Offering high quality exterior and interior painting in East Anglia.

Our ethos is to establish long lasting relationships with customers and to ensure their projects are delivered to the highest standard.

If you would like a free no obligation quotation please feel free to contact Garry
07960 433676 or
gmrdecorators@gmail.com



HILL FARM

LANDSCAPES

*Landscaping &
 Fencing Contractors*

01206 303608
www.hillfarmlandscapes.com

KENNY'S SESAW NEWS



Last month I mentioned looking forward to Spring, not SNOW!! Mum says I tempted Fate, whatever that means. The weather may be bad news but here is a story to warm your heart about a fifteen year old Whippet/Jack Russell cross. Billy arrived last year after his owner died but we despaired of him ever finding another home until he met the perfect foster family. Now, despite his age, my old pal is loved and enjoying life to the full. You can

bring so much happiness to an older dog when taking them into your home and they return that happiness to you. It may not be for as long as you would wish but it makes all the difference while it lasts to you and them. Now put your hanky away now because Ollie (the Black) Cat says I have to talk to you about a trio of ex-feral cats that are desperately looking for jobs as vermin exterminators. They need a warm place to sleep and regular supply of food. If you are interested Mum says we can visit and advise how to introduce working cats to your environment and support you should they become ill and need to go to the vets.

Time to hit the send button because I'm all behind again and don't want to keep the Editor waiting. Don't forget to call in at our Spring Sale if you are nearby, it starts at 10am, 22nd April at The Old School, Long Melford, CO10 9DX. That's all folks, from me, **Kenny (the Boss) Chihuahua,**

Suffolk & Essex Small Animal Welfare, Stoke Road, Leavenheath, CO6 4PP - Open 10-1pm Thurs-Sun (Reg. Charity No.1124029)

MR. WHEELER
Since 1883

Visit our specialist wine cellar today!

NOW OPEN

Wednesday to Saturday, 10am to 6pm

Offering a selection of high quality wine for entertaining and everyday enjoyment, from small, independent vineyards; plus unmissable deals on a great range of fine wine.

visit www.mrwheelerwine.com or call 01206 713560

MrWheeler's Wine Cellar is our shop in Dedham.
Birchwood Farm, Birchwood Road, Dedham, Essex CO7 6HX

we choose better wine™

MARY - ANNE MORRISON
MILLINERY

INDEPENDENT MILLINER
Providing a ready-made and bespoke service

01206 262391 | 07850 571879
www.mamorrison.co.uk | hats@mamorrison.co.uk

Matthew Douglas
Forward Thinking Independent Financial Advice

"The returns we have had from the investments have been way above our expectations"

Mr & Mrs McMillan

New Model Adviser TOP 100 2016

To talk with one of our fully qualified staff about the range of products and services we offer, or to book an appointment to meet us in person call us on 01206 265904

Matthew Douglas Ltd, Wheatsheaf House, 4 High Street, Hadleigh, Suffolk IP7 5AP
Matthew Douglas Ltd is authorised and regulated by the Financial Conduct Authority (226918)

$$\begin{array}{c} \text{H} & \text{H} & \text{CH}_3-\text{CH}_2-\text{OH} \\ | & | & \\ \text{H}-\text{C} & - & \text{C}-\text{H} \quad \xrightarrow{\text{N}_2\text{O}_2} \text{P} \\ | & | & \\ \text{H} & \text{H} & \text{CH}_3-\text{C}-\text{CH}_3 \\ & & \parallel \\ & & \text{O} \end{array}$$

$$\omega(A) = \frac{x \cdot Ar(A)}{Ar(AxBy(z))} \Rightarrow x = \frac{\omega(A) \cdot Mr}{Ar(A)}$$

$$\omega(B) = \frac{y \cdot Ar(B)}{Ar(AxBy(z))} \Rightarrow y = \frac{\omega(B) \cdot Mr}{Ar(B)}$$

$$\omega(C) = \frac{z \cdot Ar(C)}{Ar(AxBy(z))} \Rightarrow z = \frac{\omega(C) \cdot Mr}{Ar(C)}$$

$$ax^2 + bx + c = 0 \quad \begin{cases} x_1 + x_2 = -\frac{b}{a} \\ x_1 \cdot x_2 = \frac{c}{a} \end{cases}$$

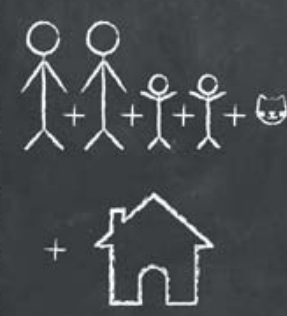
$$r = \frac{2S}{a+b+c}$$

$$l = 2rR$$


$$S = \frac{1}{2}R^2$$

$$l_{AB} = 2R \cdot \frac{\varphi}{360^\circ}$$


$$S_{OAB} = \frac{1}{2}R^2 \cdot \frac{\varphi}{360^\circ}$$




+



+




=



Simplifying property since 1966

Value your property online
now at boydens.co.uk



BOYDENS



We are a local building company with many years experience working on new and period country houses and cottages.

.....

For new build, conversions, maintenance, repair and joinery,
for design and construction and for planning and listed building applications

.....

Telephone us on
Nayland (01206) 263632
Or email
info@harrisbuilding.net
and you will find us at
www.harrisbuilding.net




The Quay School of Theatre Dance

Classes held in Sudbury
and
Ixworth nr Bury St. Edmunds
Pupils accepted from 3 years to adult

**EXAMS • SHOWS
SUMMER WORKSHOPS**

For further details please contact:
Mrs Marie Morris A.I.S.T.D. Dip. C.D.E.
Telephone: 01359 271057
Mobile: 07766 290161
email: quaydance@hotmail.co.uk
www.quaydance.co.uk



*Ballet - Modern - Jazz
Tap - Street - Fitsteps*

 Quay Dance

IMPERIAL SOCIETY OF TEACHERS OF DANCING





**Count on us to help you
with your tax returns**

Business advisory, tax, audit and accounting
services for companies, charities,
trusts and individuals

The Old Exchange, 64 West Stockwell St, Colchester, Essex CO1 1HE
Telephone: **01206 762200**
15 High Street, West Mersea CO5 8QA
Telephone: **01206 385049**

www.whittles.co.uk

SMALL ADVERT COLUMN

Nayland and Wiston residents may place free adverts for items valued at under £50. Items £50 and over incur a charge of £5.

To Advertise Contact: Lorraine Brooks 262807
lorraine.nayland@btinternet.com

WANTED:

POSTAGE STAMPS for East Anglian Air Ambulance. Please leave them in box in the Post Office.

UNWANTED BICYCLES for Re-cycle Bicycles to Africa, www.re-cycle.org. Contact Iris Sebba 262632 or take them to the Re-Cycle Depot: Unit 8 The Grove Estate, Colchester Road, Wormingford CO6 3AJ Tel: 01206 617 865

FOR SALE:

SHOPSMITH MARK V MODEL 510 HOME

WORKSHOP SYSTEM, reasonable offers considered.
Nayland 01206 262181

NAYLAND WITH WISSINGTON COMMUNITY TIMES

FOR SALE:

GARDEN SHREDDER BOSCH AXT RAPID 2000/2200 Used twice in excellent condition £45. 01206 262586

THERMOSTAT WARMUP 3IE programmable with 2 inch colour screen in cream / white for Warmup underfloor heating system. £40. Call Nayland 01206 262331

CHEST FREEZER HAIER LW-185G, 185L capacity white dual fridge freezer. H85 x W84 x D70cm. £50. Call Nayland 01206 262331

HUMIDIFIER Vicks 610e Warm Mist for coughs & colds. Nearly new. Was £40 new, accept £20. Call 01206 262331

RIDING HAT Black Belstar, kids size 6.5/53, hardly used - £20. 01206 262331

GIRL'S CYCLE HELMET Hello Kitty, pink. £5. 01206 262331

Hunnaball of Colchester

Family Funeral Service



York House, 41 Mersea Road
Colchester, CO2 7QT

01206 760049

www.hunnaball.co.uk

Personalised Playing Cards

Spingold
Design & Print



Ideal for:

- ♠ Special Events
- ♥ Corporate Gifts
- ♣ Birthday Presents
- ♦ Promotional Material
- ♠ Wedding Favours/Gifts



Personalised Backs

1 custom image on the card backs, with standard playing card faces.

Personalised Fronts & Backs

54 different images on the faces of the cards, plus a back image.

| Number of Packs | Single Sided Personalisation | Double Sided Personalisation |
|--------------------|------------------------------|------------------------------|
| 1 Pack (per pack) | £18.00 | £33.00 |
| 2 Packs (per pack) | £13.20 | £20.40 |
| 5 Packs (per pack) | £9.00 | £10.80 |

Please enquire for details on larger quantities, orders of 100+ packs can have a bespoke printed box too!

www.spingold.co.uk
01206 262751

Spingold Design & Print Ltd.
The Studio | Harpers Hill | Nayland
Colchester | Essex | CO6 4NT

WORDSEARCH

| | | | | | | | | | | | | | | |
|---|---|---|---|---|---|---|---|---|---|---|---|---|---|---|
| | | | T | R | U | O | C | N | O | T | P | M | A | H |
| S | | | | | | H | | | | | | | | E |
| | I | | | | E | T | A | T | O | N | | | E | L |
| | | S | | L | | | | | | | | T | | I |
| B | R | E | S | S | I | N | G | H | A | M | O | | | G |
| L | | E | | I | | | | A | | C | | | | R |
| E | A | | | | N | N | | D | | | | | | O |
| M | | | | E | | G | | I | | | | | | S |
| H | | | D | | L | | H | | W | I | S | L | E | Y |
| E | | E | | E | | | | U | | E | | | | M |
| I | | | S | | | | | | R | | K | | | O |
| M | | E | | | | | | | | S | | | | O |
| | Y | | | | | | | | | | | | | |
| | | | G | R | E | A | T | D | I | X | T | E | R | |

ANAGRAM SOLUTION

1 Begonia, 2 Petunia, 3 Impatiens, 4 Geranium, 5 Fuchsia, 6 Lobellia, 7 Ageratum, 8 Marigold, 9 Gazania, 10 Verbena, 11 Alyssum



CHEAPER HEATING OIL & COAL

Together We Save on
<http://essexoil.club/>
& www.wctbayford.co.uk
(new sites for horkesleybuyers.com)

SCHOOL TERM DATES 2018

Spring Term ends: 29 March
 Summer Term begins: 16 April
 Summer Half Term: 28 May – 1 June 2018

ST. JAMES' CHURCH HALL HIRE CHARGES

Monday – Friday (Hourly Rates) £5.00
MINIMUM CHARGE (2 hours) £10.00
Weekends (Hourly Rates) £6.00
MINIMUM CHARGE (2 hours) £12.00

During Winter: Heating Vouchers @ £1 each

Bookings: online at www.naylandandwiston.net
 or Anna Boon 262780 annaboone@btinternet.com
 Collect Key from 43 Bear Street

NAYLAND VILLAGE HALL HIRE CHARGES (from 1 April 2014)

Inc: Hall, Stage, Kitchen & Bar - Changing Rooms: £20 extra per session
 Licence to provide Alcohol £20 extra

| Sunday – Friday Hourly Rates | Residents | Non Residents |
|------------------------------|-----------|---------------|
| 9am – 6pm (April-Sept) | £10.00 | £13.50 |
| 9am-6pm (Oct-March) | £11.00 | £15.50 |
| 6pm-midnight (April-Sept) | £11.00 | £15.50 |
| 6pm-midnight (Oct-March) | £12.00 | £17.50 |

MINIMUM HIRE: 2 HOURS RESIDENTS – 3 HOURS NON RESIDENTS

Saturday

| Daytime until 6pm | Hourly Rates as above | |
|--------------------------------------|-----------------------|---------|
| Evening 6pm-midnight | £140.00 | £210.00 |
| All day until 6pm | £90.00 | £110.00 |
| All day until 6pm with playing field | £140.00 | £160.00 |
| Playing Field only | £50.00 | £50.00 |
| Playing Field & Changing Rooms | £70.00 | £70.00 |
| Meeting Room only (3 hour session) | £15.00 | £21.00 |

Reduced terms for use of the hall over a period can be negotiated with the Treasurer, Peter Mann on 262830

Bookings: online at www.naylandandwiston.net or
Jane Hastie 07748 953175 naylandvillagehall@yahoo.co.uk

BUS TIMETABLES Service 84 (Sch = Schooldays only, NSch = Non-schooldays only) No service on Sunday or Public Holidays
 From 6 September 2017

Sudbury – Newton Green – Assington – Leavenheath – Stoke by Nayland – Nayland – Gt Horkesley – General Hospital – Colchester

| Monday to Saturday | Sch | NSch | | | | | Saturdays | | | | | | | |
|-----------------------------|-------|-------|-------|-------|-------|-------|-----------|-------|-------|-------|-------|-------|-------|-------|
| Sudbury, Bus Station | 0555 | 0655 | 0915 | 1030 | 1200 | 1330 | 1500 | 1500 | 1630 | 1730 | 0715 | 1015 | 1315 | 1615 |
| Great Cornard School | | | | | | | 1520 | | | | | | | |
| Nayland, Doctors Surgery | 0643 | 0744 | 1003 | 1118 | 1248 | 1418 | 1555 | 1548 | 1728 | 1818 | 0803 | 1103 | 1403 | 1703 |
| Colchester General Hospital | 0658 | 0801 | 1018 | 1133 | 1303 | 1433 | 1610 | 1603 | | 1833 | 0818 | 1118 | 1418 | 1718 |
| Colchester North Station | 0703 | 0806 | 1023 | 1138 | 1308 | 1438 | 1615 | 1608 | | 1838 | 0823 | 1123 | 1423 | 1723 |
| Colchester Osbourne Street | 0710 | 0814 | 1030 | 1145 | 1315 | 1445 | 1622 | 1615 | | 1845 | 0830 | 1130 | 1430 | 1730 |
| Norman Way Schools | | 0825 | | | | | | | | | | | | |

| Monday to Saturday | Sch | NSch | | | | | Sch | NSch | | | | | Saturdays | |
|-----------------------------|-------|-------|-------|-------|-------|-------|-------|-------|-------|-------|-------|-------|-----------|-------|
| Norman Way Schools | | | | | | | 1550 | | | | | | | |
| Colchester Stanwell Street | 0725 | 0725 | 0905 | 1035 | 1205 | 1335 | 1605 | 1450 | | 1745 | 0845 | 1145 | 1445 | 1745 |
| Colchester North Station | 0733 | 0733 | 0913 | 1043 | 1213 | 1343 | 1613 | 1458 | | 1753 | 0853 | 1153 | 1453 | 1753 |
| Colchester General Hospital | 0739 | 0739 | 0919 | 1049 | 1219 | 1349 | 1619 | 1504 | | 1759 | 0859 | 1159 | 1459 | 1759 |
| Nayland, Doctors Surgery | 0754 | 0754 | 0934 | 1104 | 1234 | 1404 | 1634 | 1519 | | 1814 | 0914 | 1214 | 1514 | 1814 |
| Great Cornard School | 0840 | | | | | | | | | | | | | |
| Sudbury, Bus Station | 0855 | 0840 | 1020 | 1150 | 1320 | 1450 | 1720 | 1605 | | 1900 | 1000 | 1300 | 1600 | 1900 |

For more information: **Chambers Coaches** www.chamberscoaches.co.uk Tel: 01787-375360 or 01206-769778

LOCAL INFORMATION

Mobile Library Saturdays 4-weekly alternating between: High Street & Parkers Way. *See page 17 for details*
 Post Office High Street Tel: 262210 Early Closing on Wednesday
 Doctors Surgery 93 Bear Street Tel: 262202 (*out of hours emergency 01206-578070 or NHS 111*)
 Surgery hours: Mon-Fri 8am-6pm (*telephone service until 6.30*) www.northhillsurgery.co.uk
 Scheme Manager: Ellen Salmon, 15 Samford Close, Holbrook Tel 01473 328458
 Parkers Way Head Teacher: Raegan Delaney Tel: 262348
 Primary School Sec: Kate Field katefield955@gmail.com
 Home School Association Manager: Cheryl Leeks 263054 <http://woodlandcornernayland.blogspot.com>
 Nayland Playgroup Administrator: Nicola Peachey 263054 e-mail: woodlandcorner@outlook.com
 Woodland Corner Jayne Kennedy 262348
 Primary School Choir Charlotte Durance xxxxxxxx Karen Tranter 07970 968882 - Fridays 9.30-11.30am Village Hall
 Nayland Toddler Group Bookings: 07748 953175 naylandvillagehall@yahoo.co.uk Caretaker: Mrs Y. Spooner 262691
 Village Hall Bookings: Anna Boon 262780 stjameschurchhall@yahoo.com
 Church Hall Ch: Simon Carter 615997 V.Ch: Maggie Ryan 262837 www.naylandcommunitystores.co.uk
 Nayland Community Store (PO) Hon Sec. Andrew Gowen 262534 parkersag@yahoo.co.uk
 Royal British Legion Sec: Lorna Rumsey 01787 211975 – 3rd Monday each month 7.30pm Village Hall
 Womens Institute Sec: Barbara Smith 501942 President: Mrs Eva Rolfe 263151 - 2nd Thursday each month
 Over 60s Club Sec: Mrs Eva Rolfe 263151
 Bowls Club Jane Barbrook 263619 Tony Mann 262492 Mondays 2pm-3.30 Village Hall
 Table Tennis Club Liz Thorne 262664 - Wednesdays 2-4pm (*term times*)
 Nayland Art Club Chair: Trevor Smy 262022 www.naylandhortsoc.org.uk
 Horticultural Society Chair: Mike Hunter 264100 mikejphunter@gmail.com www.naylandconservation.org.uk
 Conservation Society Chair: Justin Dowding 262217 Membership Sec: Jill Fernandez jillyfern@gmail.com
 Village Players Chair: Rob Swan 07954 334548 rob.swan@tb9.uk
 Nayland Choir Tracy Le Grys 271553 tracyb295@gmail.com Mob 07504 118843
 First Response Chair: Alan Edwards 262800 alan@edwards-online.net
 Friends of St. James Church Sec: Caroline Ross-Stewart 263701 wistonfriends@gmail.com Ch: Bill Starling 262397
 Friends of Wiston Church Father Peter Brett 01473 372703 www.sudburywithhadleigh.net
 Roman Catholic Church Tel: 01787-375360 or 01206-769778 www.chamberscoaches.co.uk
 Chambers Buses PC 1455 Matt Paisley Tel: 101 (*non-emergency*) number
 Local Police *Babergh East SNT* email: babergheast.snt@suffolk.pnn.police.uk
 Police Safer Neighbourhood Team Tel: 0300 123 4000 www.babergh.gov.uk Endeavour House, 8 Russell Road, Ipswich IP1 2BX
 Babergh District Council Melanie Barrett melanie.barrett@babergh.gov.uk 01787 370139
 District Councillor James Finch James.Finch@suffolk.gov.uk 263649 Rose Cottage, 5 Fen Street CO6 4HT
 Suffolk County Councillor james.cartlidge.mp@parliament.uk 0207 219 4875 House of Commons, London SW1A 0AA
 James Cartlidge MP

| PARISH COUNCIL | COMMUNITY COUNCIL | VILLAGE HALL COMMITTEE |
|-------------------------------------------------------------------------------------------------------------------------------------------------------------------------------------------------------------------------------------------------------------------------------------------------------------------------------------------------------------------------------------------------------------------------------------------------------------------------------------------------------------------------------------------------------------------------------------------------------------------------------------------------------------------------------------------------------------------------------------------------------------------------------------------------------------------------|---------------------------------------------------------------------------------------------------------------------------------------------------------------------------------------------------------------------------------------------------------------------------------------------------------------------------------------------------------------------------------------------------------------------------------------------------------------------------------------------------------------------------------------------------------------------------------------------------------------------------------------------------------------------------------------------------------------------------------------------------------------------------------------------------------|-------------------------------------------------------------------------------------------------------------------------------------------------------------------------------------------------------------------------------------------------------------------------------------------------------------------------------------------------------------------------------------------------------------------------------------------------------------------------------------------------------------------------------------------------------------------------------------------------------------------------------------------------------------------------------------------------------------------------------------------------------------------------------------------------------------------------------------------------------------------------------------------------------------------------------------------------|
| <p>Clerk: Debbie Hattrell 01787 378649 pc@naylandwithwissington.suffolk.gov.uk 5 Churchill Drive, Sudbury CO10 1NZ Chairman Mary George Vice Chairman - Councillors: Gerald Battye, Martyn Booth, Patricia Fuller, Ian Harris, Graham Walker, Kathleen Cannings, Parish Recorder Wendy Sparrow Tree Warden Terry Bannister Footpath Warden Sally Bartrum <i>Meetings: 7.30pm second Wednesday of month in the Village Hall Committee Room</i> <i>Minutes: PC notice board in High Street</i></p> | <p>Chairman Rachel Hitchcock 263169 Vice-Chair Julie Clark Secretary Lorraine Brooks 262807 Treasurer Maggie Ryan President Ken Willingale Vice-President Bryan Smith Executive: Colin Ramsell, Tricia Hall, Individual: Claire Buller, Vicki Sargent, John Parsonson, Colin Moule, Iain Wright, Luke Rumbelow <i>Meetings: 2 May, 4 July, 5 September, 29 October</i> <i>8pm Church Hall (Exec 7.30)</i></p> | <p>Chairman: Iain Wright 263657 Secretary Chris Thompson Treasurer Peter Mann Vice Chairman (<i>vacancy</i>) Bookings Sec. Jane Hastie Committee: Nick Moriarty, Tricia Fuller, Will Hitchcock, Frank Warren, Karen Freeman <i>Meetings: first Monday every month (except Bank Holidays: second Monday)</i> <i>No meeting in August</i> 7.30pm Village Hall Committee Room</p> |
| <p>CHURCH naylandchurches.wordpress.com Priest in charge (<i>five ecclesiastical parishes</i>) Revd Mark Woodrow 262150 revdmarkwoodrow@gmail.com The Vicarage, Bear Street CO6 4LA Benefice Administrator: Nicola Thorogood 262453 nicola.church@yahoo.com Clergy: Revd Valri Armstrong 262814 Licensed Reader: David Rowe Reader Emeritus: Ken Willingale 262531 Lay Elders David Pryor 262303 & Kathy Hunt 262014 Bell Ringers Captain: Chris Hunt 262014</p> | <p>Organists: St James: James Finch St Mary's: Catherine Johns St James Choir: James Finch 262993 Church Wardens St James: James Carver 262970 carversnayland@talktalk.net or Kathy Hunt 262014 St Mary's: Nicola Thorogood 262453 thorogood.nicola@gmail.com or John Branfield 845107 Deanery Synod Reps St James: James Carver 262970 Helen Schalin St Mary's: Rosemary Knox 262224, John Branfield 845107</p> | <p>Parochial Church Council St James Lay Chairman: John Baker, Treasurer: James Carver 262970, Sec: Michael George 07557 998325 25 Laburnum Way CO6 4LG 68michaelgeorge@gmail.com Com: Chris & Kathy Hunt, Anita George, David & Sandra Pryor, Alex Murrison, Helen & Gustaf Schalin, Jonathan Pearson St Mary's: Churchwarden Emeritus: Gerald Knox, Secretary: Tibby Mimpriss Treasurer: John Branfield 845107 George & Fiona Storey, Sandra Gibbons, Suki Cohen, Derek Johns, Caroline Nevill, Ned Carter, Rosemary Knox, N Thorogood</p> |

COMMUNITY WEBSITE - www.naylandandwiston.net

Website manager: Justin Dowding – Tel: 262217 - e-mail: jpgowding@gmail.com

VILLAGE DIARY

| | |
|------------------------|---------------------------------------------------------------------------------------------------------------|
| March | |
| 27th | Luncheon Club for over 60s: at Longwood Barn <i>page 12 & 30</i> |
| 27th | HortSoc: Spring Speaker Ian Seager <i>Wildlife Gardens and Conservation page 29</i> |
| April | |
| 6th | Country Music Club: Charity Dance 'Brian's Country' 7pm for 7.30 Village Hall <i>page 13</i> |
| 9th | Village Hall Management Committee meeting 7.30pm Village Hall <i>page 33 & 47</i> |
| 11th | Parish Council Meeting 7.30pm Village Hall Committee Room <i>page 47</i> |
| 12th | Over 60s: meeting 2.30pm Parkers Way Community Centre <i>page 30</i> |
| 14th | Village Hall Garden Working Party from 9am <i>page 27</i> |
| 14th | Nayland Community Litterpick: meet 1pm Village Hall Car Park <i>page 15</i> |
| 16th | Women's Institute: <i>It Shouldn't Happen to a Vicar</i> Revd David Atkins 7.30pm Village Hall <i>page 24</i> |
| 17th | HortSoc: AGM & Fun Quiz 7.30pm Church Hall <i>page 15 & 29</i> |
| 18th | Village Lunch: Mark Mitchels 'The River Deben' <i>page 13 & 24</i> |
| 21st | Nayland Choir: <i>Hallelujah</i> Concert 7pm St James' Church <i>page 13 & 26</i> |
| 22nd | Country Music Club: 'Kalibre' 7pm for 7.30 Village Hall <i>page 13</i> |
| 23rd | Annual Parish Assembly: 7.45pm Village Hall <i>page 6</i> |
| 24th | Luncheon Club for over 60s: at Longwood Barn <i>page 12 & 30</i> |
| 25th | Village Players: AGM Church Hall 7.30 for 8pm <i>page 25</i> |
| 28th | Nayland Calendar Photographic Competition deadline for entries <i>page 11 & 26</i> |
| 28th | Nayland Fundraisers: Coffee Morning at 21 Court Street 10am <i>page 15 & 26</i> |
| May | |
| 2nd | Community Council: meeting 8pm Church Hall (Exec 7.30) <i>page 8 & 47</i> |
| 5th | Plant Sale at Parker's, 43 Bear Street 9am-12 noon <i>page 13</i> |
| 6th | Rogation Sunday Trailer Ride 3pm from St Mary's Church <i>page 38</i> |
| 7th | Nayland Calendar Photographic Display 1pm-4pm Church Hall <i>page 11</i> |
| 7th | Conservation Society: May Walk meet 2pm Nayland Fire Station <i>page 15 & 28</i> |
| 9th | Royal British Legion: outing to the Rix Stourgarden <i>page 22</i> |
| 9th | Parish Council Meeting 7.30pm Village Hall Committee Room <i>page 47</i> |
| 10th | Over 60s: meeting 2.30pm Parkers Way Community Centre <i>page 30</i> |
| 14th | Royal British Legion: meeting 7.30 Church Hall <i>page 24</i> |
| 14th | Village Hall Management Committee meeting 8pm Village Hall <i>page 33 & 47</i> |
| 16th | Conservation Society: visit to Belchamp Hall Suffolk 2.30pm <i>page 15 & 28</i> |
| 19th | HortSoc: Morning Market 9.30am Church Hall <i>page 15 & 29</i> |
| 21st | Women's Institute: Annual Meeting, Resolutions, and Beetle Drive 7.30pm Village Hall <i>page 24</i> |
| 22nd | Luncheon Club for over 60s: at Longwood Barn <i>page 12 & 30</i> |
| 27th | Country Music Club: 'Brians Country' 7pm for 7.30 Village Hall <i>page 13</i> |
| 28th | Nayland Church Fete: 2pm-4pm Webb's Meadow <i>page 23</i> |
| June | |
| 2nd | John Constable Birthday Walk 2.30pm Recreation Ground, Stoke to Nayland <i>page 37</i> |
| 6th | HortSoc coach outing to Lullington Castle & The World Garden <i>page 22 & 29</i> |
| 10th | Conservation Society: Open Gardens 2pm-6pm <i>page 15 & 28</i> |
| 16th | Primary School & Woodland Corner: Summer Fete & Pop Up Circus <i>page 14</i> |
| 18th | Women's Institute: <i>SSAFA: the Armed Forces Charity</i> Tony Chibnall 7.30pm Village Hall <i>page 24</i> |
| 19th | Luncheon Club for over 60s: at Longwood Barn <i>page 12 & 30</i> |
| 25th | Conservation Society: <i>Pargetting</i> Bill Sargent 7.15pm Village Hall <i>page 15 & 28</i> |
| Forward Planner | |
| 1st July | Nayland 10k, 5k & 1k Fun Run <i>page 6</i> |
| 13th July | HortSoc: Summer Garden Party <i>page 29</i> |

Thank you for your contributions – if you have any ideas or suggestions please contact the Editor

DEADLINE (subject to space) for receipt of copy in the **JUNE** issue is 3pm on: **20th MAY**

| | | | |
|----------------------------------------------------------------------------------------------------------------------------------------------------------------------------------------------------------------------------------------------------------------------------------------------------------------------------------------------------------------------------------------------------------------------------------------------------------------|---------------------------------------------------------------|--------------------|--------|
| CONTACT | ADVERTISING COSTS | | |
| The Editor: Lorraine Brooks Tel: 262807 E-mail: naylandcc@yahoo.co.uk www.naylandcommunitycouncil.org.uk Copy can be posted in the Community Times Box in Nayland Post Office To ensure contributions can be accommodated in the space available it is advisable that space for promotion or large articles is reserved with the editor. | Six issues for the Price of Five – get one advert FREE | | |
| | Size | Dimensions | Cost |
| | 1/16 page portrait | 6.3cm H x 4.4cm W | £5 |
| | 1/8 page landscape | 6.3cm H x 9cm W | £10 |
| | 1/4 page portrait | 13cm H x 9cm W | £17.50 |
| | 1/4 page landscape | 6.2cm H x 18.4cm W | £17.50 |

All monies raised from the Community Times go to good causes within the community. The Editor and Community Council may not be held responsible for the accuracy of articles or any other claims made by any advertiser in the Community Times.

The Editor and Community Council reserves the right to alter, shorten or refuse any items submitted for publication.

The Community Times is produced and distributed by the **Nayland-with-Wissington Community Council**

Registered Charity No.304926

The Community Times can also be viewed / downloaded from: **www.naylandcommunitycouncil.org.uk**